

COLD CLIMATE VERTICAL HEAT PUMP CERTIFIED DRAWING

DWG. NO.
VSXC-Series Submittal
REV. - 04

PROJECT		DATE	4/24/26	BY	JL	REVISIONS
PURCHASER		P.O. #		BY		DESCRIPTION
ARCHITECT		SHIP DATE				
ENGINEER						
HVAC CONTR.						
GEN. CONTR.						
DESIGNATION	MODEL NUMBER	QTY				
A						
B						
C						
TOTAL						

UNIT SPECIFICATIONS+

SERIES MODEL #	8VSXC12
Cooling Capacity (Btu/hr) ²	11,400
Sensible Capacity (Btu/hr) ²	9,100
Cooling Capacity Range (Btu/hr) ²	4,700 - 16,000
SEER ²	13.4
Heating Capacity (Btu/hr) ³	11,100
Heating Capacity Range (Btu/hr) ³	4,400 - 17,300
HSPF ²	7.7
Voltage	208
Current in Cooling Operation-Nominal (Amps)	5.1
Power in Cooling Operation-Nominal (Watts)	1056
Current in Heat Pump Operation-Nominal (Amps)	3.9
Power in Heating Pump Operation-Nominal (Watts)	806
Electric Heat (kW) (Optional)	1.0
Current in Heating Pump Operation-Nominal + 1.0kW Elec Heat (Amps)	8.7
Power in Heating Pump Operation-Nominal + 1.0kW Elec Heat (Watts)	1,806
MCA (with 1.0kW electric heat)	17.3
MOCP (with 1.0kW electric heat)	20
MCA (without electric heat)	11.3
MOCP(without electric heat)	15
Airflow (CFM)	520
LOW AMBIENT PERFORMANCE	
HEATING CAPACITY @ 10F	10,600 + 3,400 Electric Heat
COP @ 10F	2.5
HEATING CAPACITY @ 5F	9,800 + 3,400 Electric Heat
COP @ 5F	2.35
HEATING CAPACITY @ -5F	8,100 + 3,400 Electric Heat
COP @ -5F	2.0

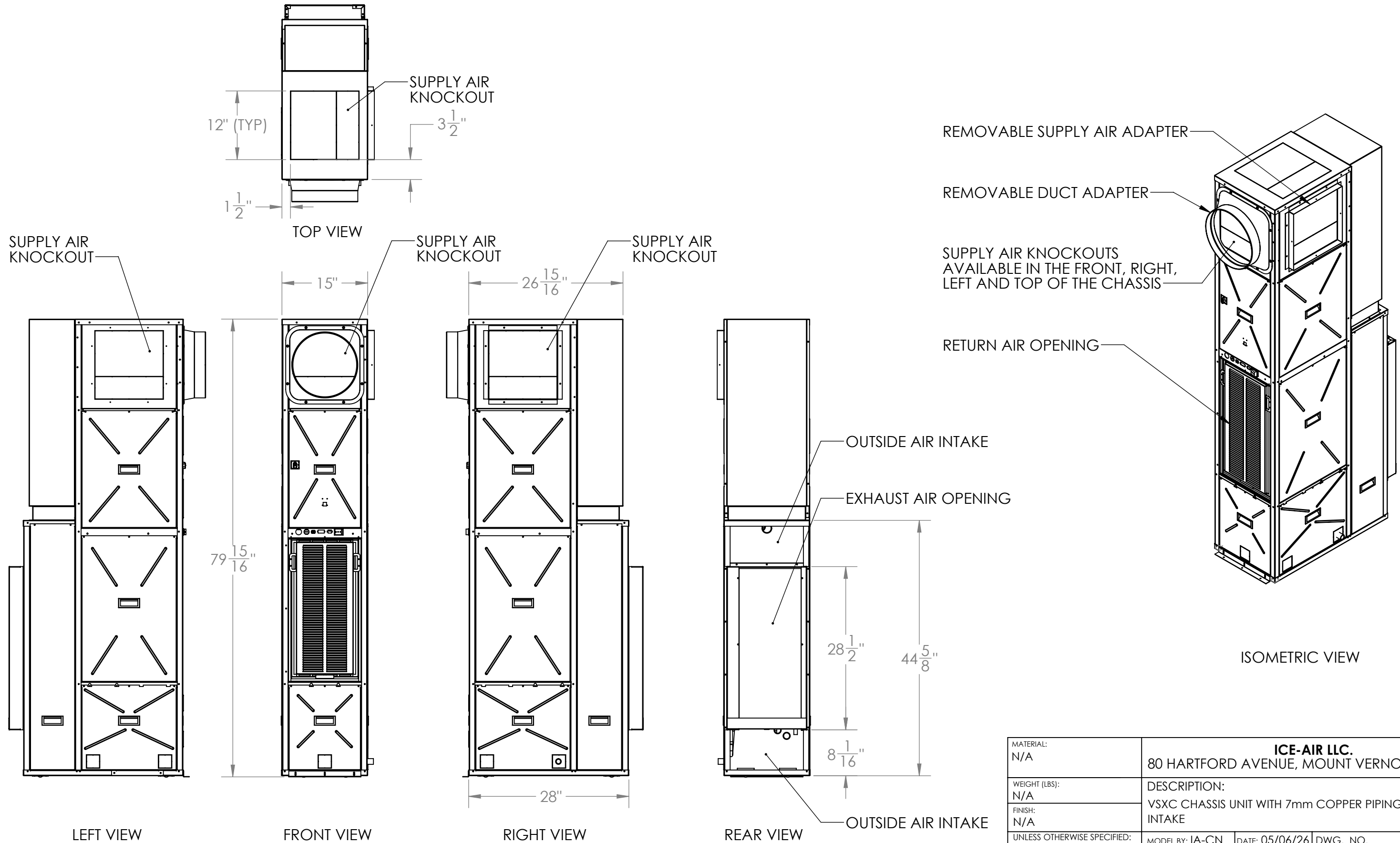
SPECIFICATION NOTES:

1. Performance data according to CAC AHRI 210/240 standard.
2. Rated performances in cooling mode @ 80F/67F DB/WB Indoors and 95F/75F DB/WB Ambient
3. Rated performances in heating mode @ 70F/60F DB/WB Indoors and 47F/43F DB/WB Ambient
4. Units without electric heat will operate below -5F with derated performance. Performance below -5F has not been certified.

GENERAL NOTES:

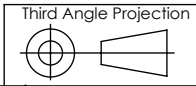
- 1: For use as a complete assembly only.
Fo replacement unit applications,
consult Manufacturer.

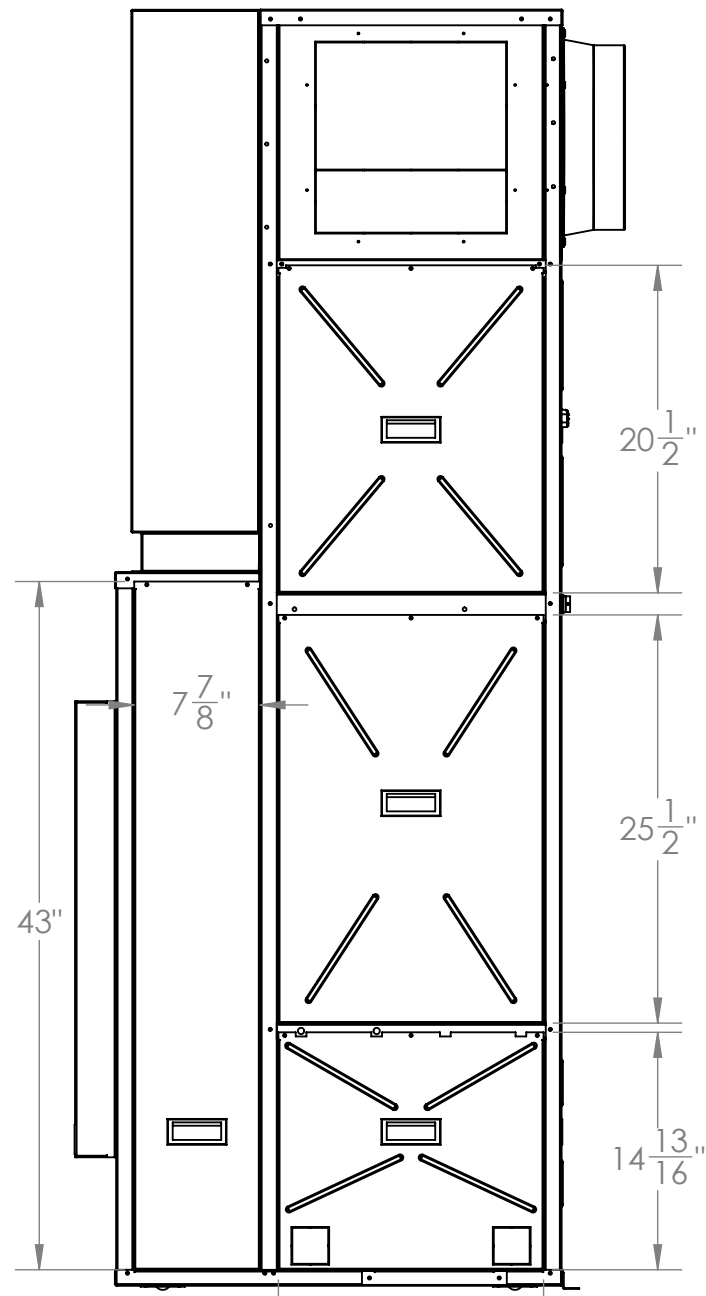
CUSTOM NOTES



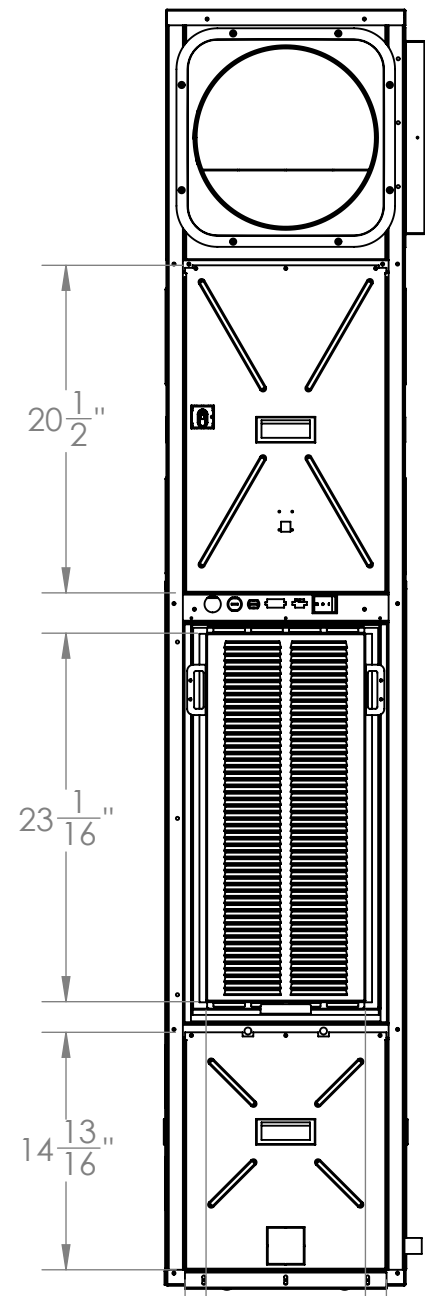
PROPRIETARY AND CONFIDENTIAL
 This drawing is the intellectual property of Ice Air, LLC and consists of confidential data belonging solely to Ice Air, LLC. The sharing of this data with you does not constitute a license to share this data with any third party, which is strictly prohibited without Ice Air's prior written consent.

MATERIAL: N/A	ICE-AIR LLC. 80 HARTFORD AVENUE, MOUNT VERNON, NY 10553		
WEIGHT (LBS): N/A	DESCRIPTION: VSXC CHASSIS UNIT WITH 7mm COPPER PIPING, FRONT INTAKE		
FINISH: N/A	MODEL BY: IA-CN	DATE: 05/06/26	DWG. NO.
UNLESS OTHERWISE SPECIFIED: DIMENSIONS ARE IN INCHES TOLERANCES: FRACTIONAL ± 1/32 ANGULAR: MACH ± ° BEND ± 1° TWO PLACE DECIMAL ± .03 THREE PLACE DECIMAL ± .015	DRAWING BY: TL	DATE: 05/06/26	SAB-11382-7FI(APP)
SIZE B	SCALE: NONE DO NOT SCALE DRAWING	SHEET 1 OF 2	REV 03

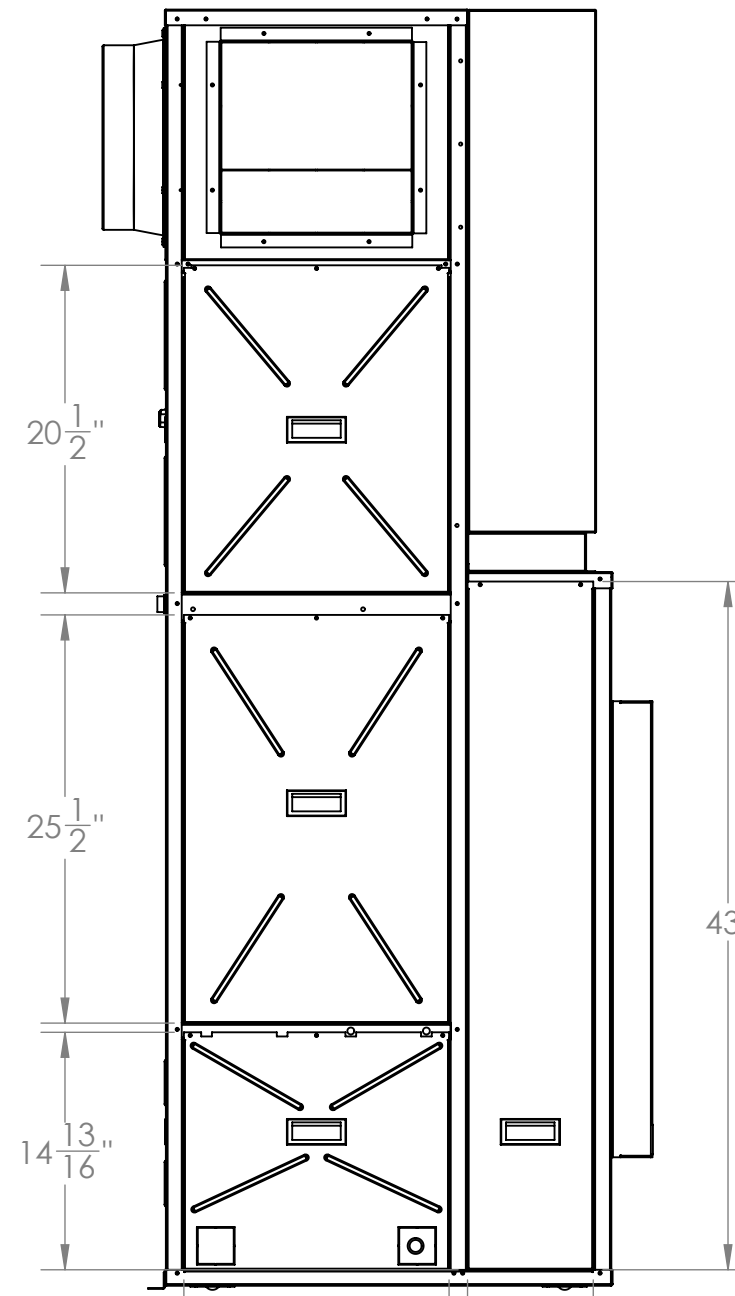




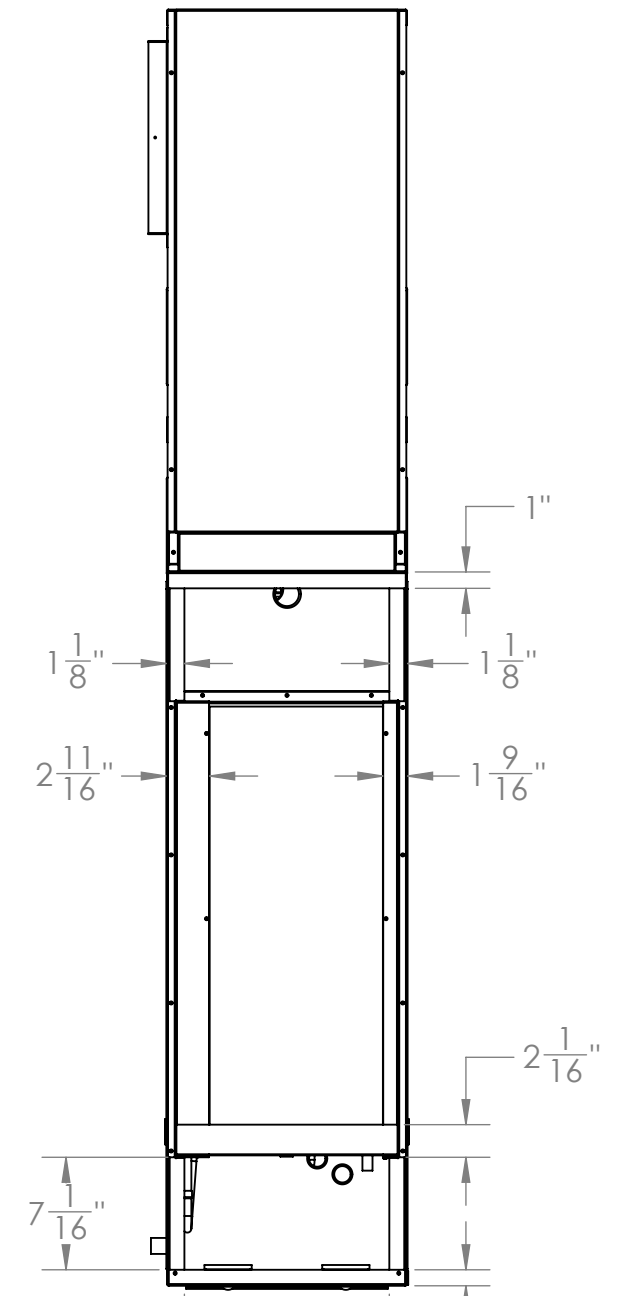
LEFT VIEW



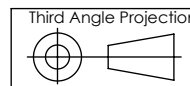
FRONT VIEW



RIGHT VIEW

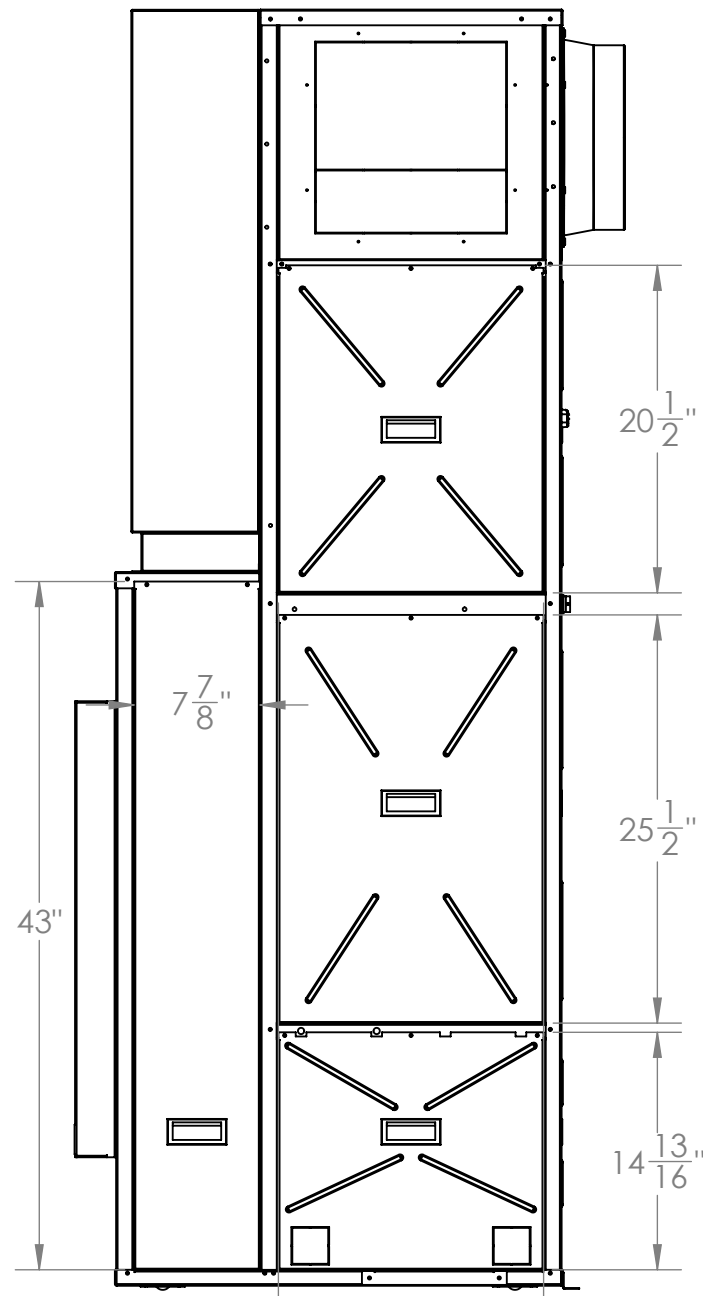


REAR VIEW

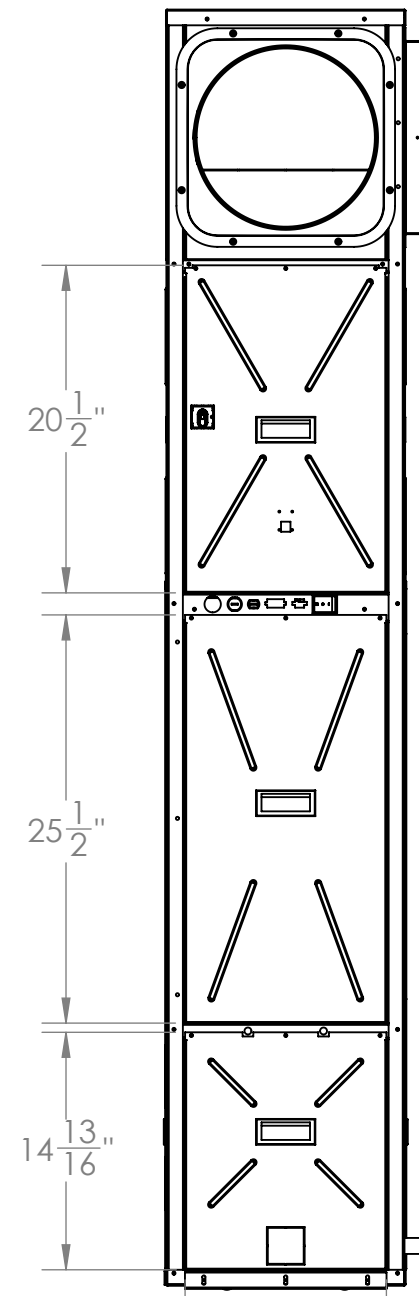


PROPRIETARY AND CONFIDENTIAL
 This drawing is the intellectual property of Ice Air, LLC and consists of confidential data belonging solely to Ice Air, LLC. The sharing of this data with you does not constitute a license to share this data with any third party, which is strictly prohibited without Ice Air's prior written consent.

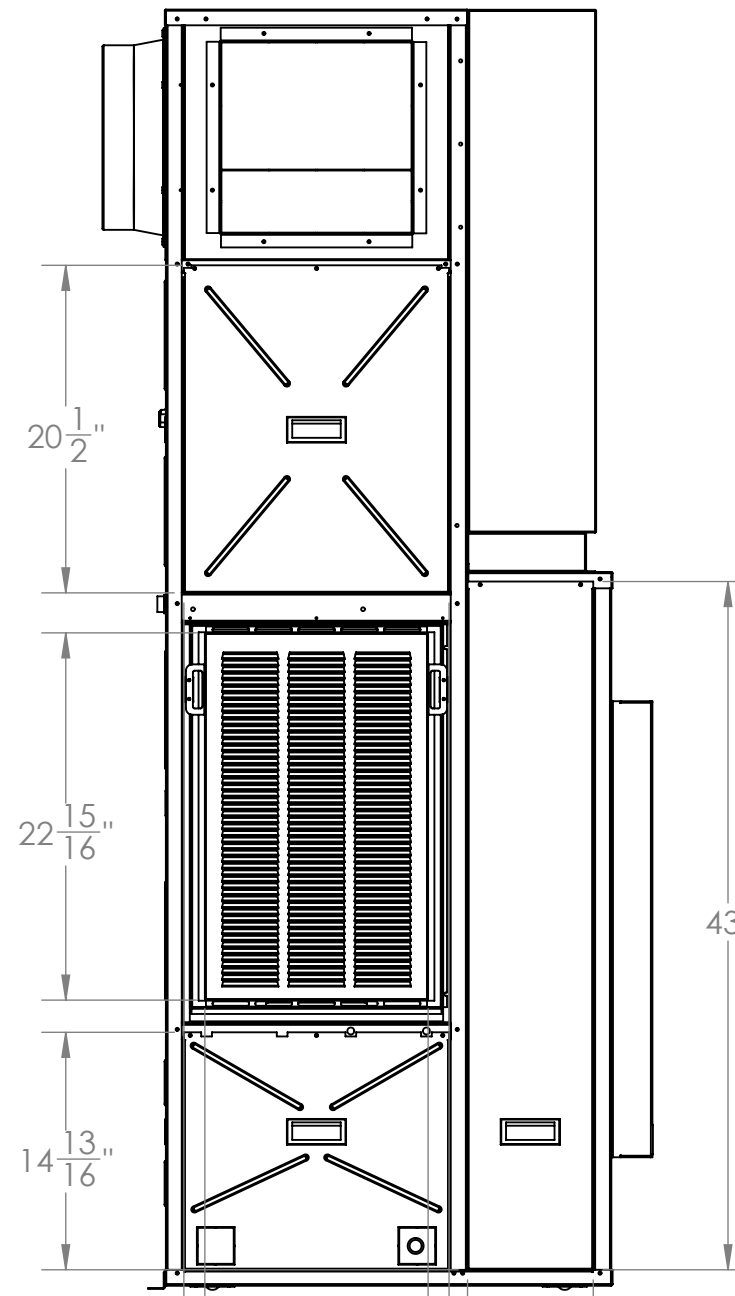
MATERIAL: N/A	ICE-AIR LLC. 80 HARTFORD AVENUE, MOUNT VERNON, NY 10553		
WEIGHT (LBS): N/A	DESCRIPTION: VSXC CHASSIS UNIT WITH 7mm COPPER PIPING, FRONT INTAKE		
FINISH: N/A	MODEL BY: IA-CN	DATE: 05/06/26	DWG. NO.
UNLESS OTHERWISE SPECIFIED: DIMENSIONS ARE IN INCHES TOLERANCES: FRACTIONAL ± 1/32 ANGULAR: MACH ± ° BEND ± 1° TWO PLACE DECIMAL ± .03 THREE PLACE DECIMAL ± .015	DRAWING BY: TL	DATE: 05/06/26	SAB-11382-7FI(APP)
SIZE B	SCALE: NONE DO NOT SCALE DRAWING	SHEET 2 OF 2	REV 03



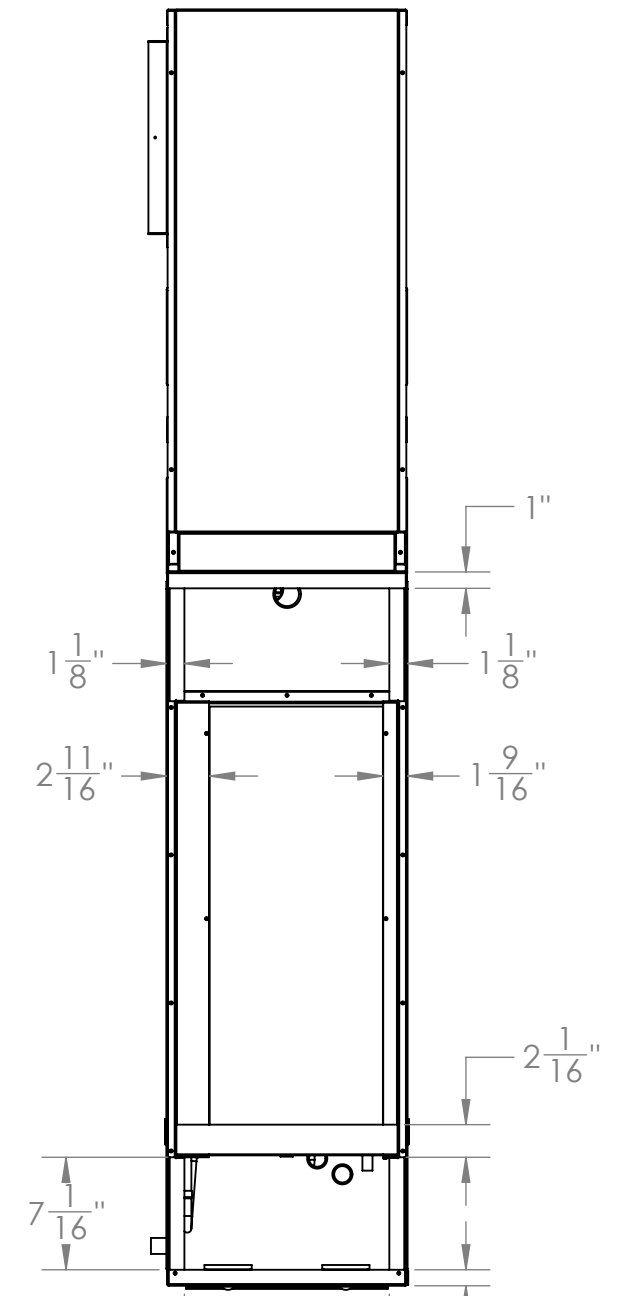
LEFT VIEW



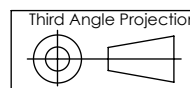
FRONT VIEW



RIGHT VIEW



REAR VIEW



PROPRIETARY AND CONFIDENTIAL
 This drawing is the intellectual property of Ice Air, LLC and consists of confidential data belonging solely to Ice Air, LLC. The sharing of this data with you does not constitute a license to share this data with any third party, which is strictly prohibited without Ice Air's prior written consent.

MATERIAL: N/A	ICE-AIR LLC. 80 HARTFORD AVENUE, MOUNT VERNON, NY 10553		
WEIGHT (LBS): N/A	DESCRIPTION: VSXC CHASSIS UNIT WITH 7mm COPPER PIPING, RIGHT HAND INTAKE		
FINISH: N/A	MODEL BY: IA-CN	DATE: 05/06/26	DWG. NO.
UNLESS OTHERWISE SPECIFIED: DIMENSIONS ARE IN INCHES TOLERANCES: FRACTIONAL ± 1/32 ANGULAR: MACH ± ° BEND ± 1° TWO PLACE DECIMAL ± .03 THREE PLACE DECIMAL ± .015	DRAWING BY: TL	DATE: 05/26/26	SAB-11382-7RI(APP)
SIZE B	SCALE: NONE DO NOT SCALE DRAWING	SHEET 2 OF 2	REV 02

PRODUCT SPECIFICATIONS
SINGLE PACKAGED HEAT PUMP (SPHP)

ICE AIR HI SPEC™ UNITS
'VSXC' SERIES UNITS

1. Equipment: Provide "VSXC" Series Single Packaged Heat pump (SPHP), as manufactured by Ice Air, LLC.
2. Components: Heat Pump to consist of wall plenum, exterior louver, cooling/heating chassis and front panel. Units to operate at 208 / 230-volt, single phase, 60 hertz circuits.
3. Wall Plenum: Wall plenum exterior dimensions to be 44-3/4" high x 16" wide to comply with US DOE requirements for new construction SPHPs. Wall plenum to be factory fabricated of 18 gauge galvanized steel and to be shipped with a mechanically-attached temporary coated cardboard filler panel at the exterior for weather protection. Cardboard filler panel to be removed prior to chassis and louver installation. Wall plenum to have built-in pitch of at least 1/2" and to be fabricated with an angled rain lip for proper drainage to the exterior of the building. Wall plenums for masonry locations to be factory fabricated to match the full wall depth at each location; wall plenums with field-installed extension pieces are not acceptable.
4. Louvers (Optional): Exterior louver to be horizontal, extruded aluminum blade-type construction with clear anodized (painted Duranar) finish. Louver to be supplied with stainless steel fastening hardware. Louvers by others to have minimum 70% free area and to be approved by SPHP manufacturer.
5. Chassis: Cooling chassis to be a self-contained, assembly consisting of a sealed refrigerant system, evaporator and condenser sections with separate Electronically Commutated (EC) motors (single motor units are not acceptable), (optional) Energy Recovery Ventilator (ERV), (optional) remote mounted thermostats and (optional) a non-fused disconnect. Provide throwaway filter with each unit.
- 5a. Refrigeration System: Sealed refrigerant system to consist of enhanced vapor injection (EVI) variable speed compressor, copper tube / aluminum fin evaporator and condenser coils, refrigeration metering device consisting of a capillary tube expansion system, a reversing valve and interconnecting tubing. System to be factory charged and sealed and capable of operating in the cooling mode to an outdoor ambient temperature of 38 °F. All units to be manufactured with R32 refrigerant; units containing R22, R407C, or r410a refrigerant are not acceptable.

- 5b. Heat Pump System: Heat Pump operation using reverse heating cycle. System to be factory charged and sealed and factory tested to operate in heat pump mode until an outdoor ambient temperature of -5 °F.
- 5c. Evaporator Section: Evaporator motor and blower wheel to be mounted above the evaporator coil. Blower wheel to be fabricated from aluminum and to be directly driven by a multi-speed EC motor with built-in thermal overload protector. Evaporator section to contain an integral stamped and powder coated steel drain pan, draining into one 3/4" O.D. drain hose.
- 5d. Condenser Section: Condenser section to contain a separate EC motor and plastic or metal propeller fan. Condenser motor to cycle with EVI compressor and to run during the cooling and heating cycle.
- 5e. Condensate Disposal (Cooling): Building condensate drain lines is required. Condensate to drain from the indoor base pan into a 3/4" O.D. drain hose to the building drain. Condensate from the defrost cycle shall be drained into the interior section of the chassis to the building drain. At extreme cold conditions, outdoor ambient temperature of 37F and below, a drain pan heater will be energized periodically to ensure condensate water does not freeze and allow for proper drainage.
- 5g. Chassis Sheet Metal: Chassis sheet metal parts to be manufactured entirely of 18 gauge and 20 gauge galvanized steel. Chassis base pan to be powder coated inside and out to prevent corrosion of sheet metal pan. Chassis will slide into the wall plenum interior flanges and creates a positive weather seal using crushable pressure-sensitive foam tape, thereby preventing air and water infiltration. Chassis seal must be an integral part of unit construction, use of attached sealing angles or channels is not acceptable.
- 5h. Unit Controls (Optional): Unit controls to include a wall-mounted digital controller with integral electronic thermostat. Controller to be seven-day programmable type. Interior room temperature to provide true temperature readings.
6. Front access panel (Optional): Front access panel to be fabricated from 20 gauge galvanized steel. Panel to be finished in (Antique White) (Arctic White) baked powder coat finish. Front access panel to mount to chassis.
7. Warranty and Code Compliance: Unit to be guaranteed free of defects in material and workmanship for one year from date of delivery. Units to be ETL listed for safety in the United States and Canada, to have New York City MEA and BEC approvals, to be in compliance with all local, state and federal energy efficiency and building codes and to be tested in accordance with current ARI standards.