

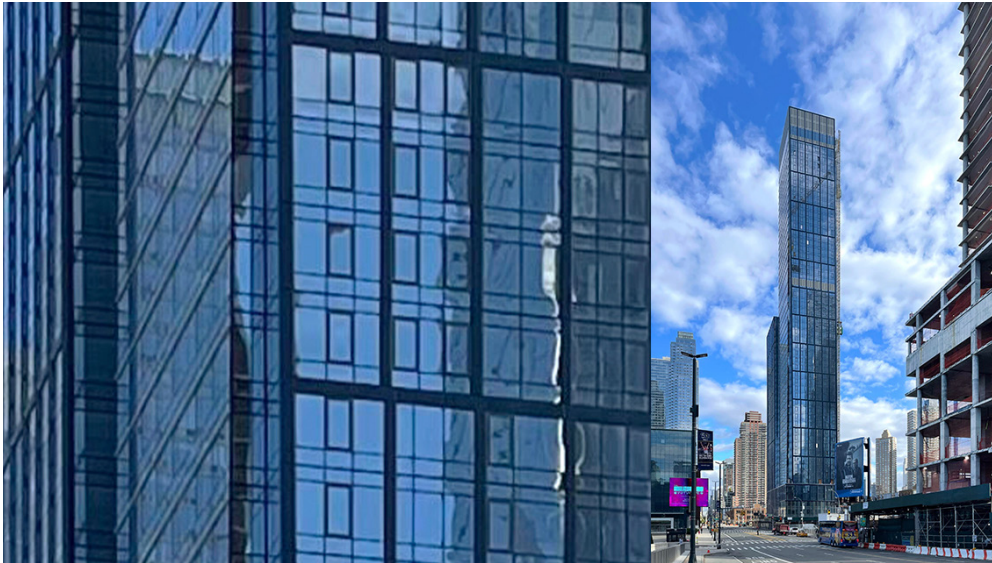
WSHP



80 Hartford Avenue
Mount Vernon, NY 10553
Tel: 877-ICE-AIR-1 (877-423-2471)
Main: 914-668-4700
Fax: 914-668-5643
email: sales@ice-air.com
www.ice-air.com

New Construction | Residential | Rental Apartments

555 W 38th St, New York, NY



WSHP



A thoughtful blend of functional spaces and breathtaking details, 555 W 38th St is a 52-story residential skyscraper in Midtown, Manhattan's Hudson Yards. The building features a total of 598 rental units ranging from studios to two-bedroom homes and includes numerous amenities, including a doorman, elevator, bike room, community facilities, outdoor space and more.

Owner/Developer

Rockrose

Architect

Pelli Clarke Pelli Architects
with SLCE

Engineer

McNamara Salvia

Water-source heat pumps (WSHPs) deliver whisper quiet high-performance heating and cooling with exceptional efficiency. Suited for a wide variety of applications, Ice Air WSHPs meet all UL standards and conform to ASHRAE 90.1, local building codes and energy standards, and are ETL-listed for safety in the U.S. and Canada.

Console WSHPs provide independent cooling and heating within rooms. Typically located against walls or beneath windows to accommodate maximum load requirements, console units are piped to a central water loop and offer high efficiency performance (13+ EER) for both new construction and replacement applications.

About Ice Air. Headquartered in Mount Vernon, NY, Ice Air develops and manufactures a wide variety of HVAC units for new construction, replacement and retrofit applications. The company's WSHP products are designed to provide years of efficient, trouble-free performance in multifamily housing, hotels/motels, dormitories, commercial buildings and similar projects.