



PTHP

PTAC

New Construction Unit

RSXC (New Technology!)

RSNU-HP

RSNU

Replacement and Retrofit Units

RS16

RSAN

RSCC

RSCM

RSEA

RSF

RSK

RSMK

RSZ

Packaged Terminal
Heat Pump and
Air Conditioner Units

Contents

Overview	3
New Construction	
RSXC (New Technology!)	4
RSNU-HP	5
RSNU	6
Replacement and Retrofit	
RS16	7
RSAN	8
RSCC	9
RSCM	10
RSEA	11
RSF	12
RSK	13
RSMK	14
RSZ	15
ExactFit	16
Thermostat Options	17
PTAC Accessory Options	18
Electrified Product Family	19
Other Products	20

RSXC, Page 4



RS16, Page 7



RSCM, Page 10



RSK, Page 13



RSNU-HP, Page 5



RSAN, Page 8



RSEA, Page 11



RSMK, Page 14



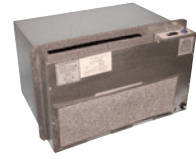
RSNU, Page 6



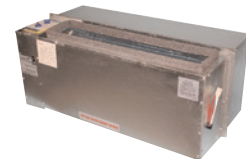
RSCC, Page 9



RSF, Page 12



RSZ, Page 15



IMPORTANT: Accessories are optional. Deviations from standard accessories may affect performance; louver requires 70% free area per original OEM specification; room enclosures must provide sufficient return air, free flowing supply air and must be properly sealed to prevent air recirculation; any non-standard components or accessories must be reviewed and approved by Ice Air or approved distributor.

About Ice Air

Ice Air has over 50 years of industry experience in developing and manufacturing a wide variety of HVAC units to provide superior new construction heating and cooling systems and to replace old installations. Ice Air offers advanced green technologies and provides world-class comfort at high efficiency levels, meeting environmental standards and promoting a healthy environment.

Ice Air's state-of-the-art units can be equipped with digital controls designed to optimize user comfort and ease of operation. Ice Air products are designed to provide years of trouble-free operation and reliable performance in multi-family housing, hotels/motels, dormitories, commercial buildings and similar projects. Units are ideal for new construction, retrofit and replacement applications.

Overview

Ice Air PTACs are designed for ultra-high efficiency and comply with LEED® criteria in a durable, user-friendly package. New construction units feature EERs to 12.0, as well as whisper-quiet sound levels, commercial grade construction and balanced air flow. Ice Air offers a full line of ExactFit™ replacement units, which provide a simplified replacement solution for nearly every major manufacturer.

Models:

- HiSpec™ units for new construction
- Full line of ExactFit™ replacement units

Advanced Optional Features:

- Xstream Air™ - add-on Outside Air Module for full-time ventilation
- SoundShield™ - OITC/STC sound attenuation package
- Heat pump options with electric heat or backup electric heat
- Custom wall sleeves and room enclosures available
- Architectural louvers available

HiSPEC

EXACTFIT

Xstream Air

Sound Shield



RSXC Series



Ice Air's breakthrough cold climate technology is a paradigm shift. It allows Packaged Terminal Heat Pumps (PTHPs) to efficiently provide space heating down to -5°F and below. And our advanced Variable Refrigerant Flow (VRF) technology ensures that your unit is pinpointing the exact amount of heating or cooling required for the desired room conditions. Efficient, sustainable, heat pumps designed for cold climates are finally a reality.

Defining Cold Climate

- Heating performance laboratory tested and certified to -5°F
- The theoretical lower limit for heating operation is -25°F ambient
- Provides cooling operation down to 38°F

What You Would Expect

- Industry leading efficiency
- Sustainable R32 Green Refrigerant
- Fits within a standard size wall sleeve (42" W x 16")



SERIES MODEL #	8RSXC09	8RSXC13	8RSXC18
Cooling Capacity ¹ (BTU/h)	9,200	12,500	16,300
Cooling Capacity Range (BTU/h)	6,300 - 11,800	6,500 - 14,900	7,300 - 18,000
EER ¹	12.1	11.1	10.0
Heating Capacity ² (BTU/h)	10,300	13,700	17,900
Heating Capacity Range (BTU/h)	8,700 - 12,600	9,000 - 14,700	10,900 - 19,300
COP ²	4.1	3.7	3.0
HSPF ²	9.6	9.5	9.0
Voltage	208	208	208
Electric Heater Power ³ (kW)	3.0 3.5	3.0 3.5 4.3	3.0 3.5 4.3
Electric Heater Current ³ (A)	14.4 16.8	14.4 16.8 20.7	14.4 16.8 20.7
Cooling Mode Current (A)	3.7	5.4	7.8
Cooling Mode Power (W)	760	1,126	1,630
Heating Mode Current (A)	3.5	5.2	8.4
Heating Mode Power (W)	737	1,086	1,750
MCA (without Electric Heat)	7.9	9.9	12.9
MOCP (without Electric Heat)	15	15	15
MCA (with Electric Heat)	18.4 21.5	18.4 21.5 26.4	18.4 21.5 26.4
MOCP (with Electric Heat)	20 25	20 25 30	20 25 30
Evaporator Motor Nominal HP	1/25	1/25	1/25
Airflow (CFM)	380	400	480
Airflow Outside (CFM)	60	60	60
Weights (lbs)	127	134	151
Low Ambient Performance			
Heating Capacity @ 10°F	6,600	7,700	11,600
COP @ 10°F	2.20	2.14	2.02
Heating Capacity @ 5°F	6,100	6,900	10,600
COP @ 5°F	1.98	1.91	1.93
Heating Capacity @ -5°F	5,500	6,400	8,100
COP @ -5°F	1.74	1.62	1.60

SPECIFICATION NOTES:

1. Cooling mode performance ratings are in compliance with AHRI Standard 310/380 and CSA Standard 744.
2. Heating mode performance ratings are in compliance with AHRI Standard 310/380 and CSA Standard 744.
3. (OPTIONAL) If back-up electric heat is required, customer has choice of manual trigger switch OR automatic changeover at -5°F (±3°F) with manual switch override.
4. Units without electric heat will operate below -5°F with derated performance. Performance below -5°F has not been certified.
5. Electric heat is recommended in markets that may experience ambient temperatures below -5°F
6. Performance data based on R32 green refrigerant.

IMPORTANT: Additional voltages and alternate electric heat and heat pump options are available. For performance data and other available options please consult factory.

RSNU-HP Series



Ice Air's packaged terminal heat pumps provide reliable occupant comfort at a great value.

Commercial grade construction provides reliability and longevity unmatched in this market category. With attractive durable enclosures, and whisper quiet operation, the RSNU-HP series is the perfect solution for new construction.



Features:

- Ultra-high efficiency – EERs to 12.0
- Electric Heat output available in various outputs to meet building heating demand.
- Heat pump operation down to 38°F with a transition to electric heat below 38°F
- Advanced tangential indoor blower provides balanced air flow
- Whisper quiet sound levels
- Standard programmable digital touchpad controls
- 5/2 or 7 day programming
- R32 Green refrigerant
- Heavy duty, commercial-grade construction throughout
- Various control options including WiFi thermostats and BMS integration



- G90 galvanized steel construction, powder-coated drain and base pans
- Furniture-grade, powder-coated cabinetry

For custom solutions, please consult factory.

SERIES MODEL #	5RSNU07-H	5RSNU09-H	5RSNU13-H	8RSNU09-H	8RSNU13-H	8RSNU18-H
Cooling Capacity ¹ (BTU/h)	8,300	9,000	11,500	9,600	11,900	16,600
Sensible Cooling Capacity ¹ (BTU/h)	6,600	7,200	9,200	7,700	9,500	11,600
EER ¹	11.6	11.4	10.6	11.2	11.0	9.5
Heating Capacity ² (BTU/h)	7,500	8,700	11,400	9,300	11,600	16,000
COP ²	3.4	3.8	3.5	3.8	3.7	3.3
Voltage	115	115	115	208/230	208/230	208/230
Electric Heater Power ³ (kW)	1.5	1.5	1.5	3.0 3.5	3.0 3.5 4.3	3.0 3.5 4.3
Electric Heater Current ³ (A)	13	13	13	14.4 16.8	14.4 16.8 20.7	14.4 16.8 20.7
Cooling Mode Current (A)	6.2	6.9	9.4	4.1	5.2	8.4
Cooling Mode Power (Watts)	716	789	1,085	857	1,082	1,747
MCA (without Electric Heat)	8.5	9.6	12.1	5.3	6.6	9.0
MOCP (without Electric Heat)	15	15	15	15	15	15
MCA (with Electric Heat)	16.7	17.2	17.2	18.5 21.5	18.5 21.5 26.3	18.6 21.6 26.5
MOCP (with Electric Heat)	20	20	20	20 25	20 25 30	20 25 30
Airflow AC High Speed (CFM)	380	380	400	380	400	540
Airflow AC Low Speed (CFM)	300	300	350	300	350	450
Airflow Outside ⁴ (CFM)	60	60	60	60	60	60
Airflow Extra Outside (CFM)	110	110	110	110	110	110
Weight Net/Ship (lbs)	130/141	134/145	134/145	134/145	134/145	137/148

SPECIFICATION NOTES:

1. Cooling mode performance ratings are in compliance with AHRI standard 310/380 and CSA standard 744.
2. Heating mode performance ratings are in compliance with AHRI standard 310/380 and CSA standard 744.
3. Heat pump operation disabled below 38 °F (± 3 °F)
4. Optional can be motorized.
5. Performance data based on R32 green refrigerant.

IMPORTANT: Additional voltages and alternate electric heat and heat pump options are available. For performance data and other available options please consult factory.

RSNU Series



Ice Air's line of new construction PTACs provide the perfect solution in a durable, user-friendly package.

Commercial grade construction provides reliability and longevity unmatched in this market category. With an attractive durable enclosure, whisper quiet operation, and highest energy efficiency available, the RSNU series is the perfect solution for new construction.



Features:

- Ultra-high efficiency – EERs to 12.0
- Advanced tangential indoor blower provides balanced air flow
- Whisper quiet sound levels
- Standard programmable digital touchpad controls
- 5/2 or 7 day programming
- Puron® R-410A Green refrigerant
- Heavy duty, commercial-grade construction throughout
- G90 galvanized steel construction, powder-coated drain and base pans
- Furniture-grade, powder-coated cabinetry



For custom solutions, please consult factory.

SERIES MODEL #	5RSNU07	5RSNU09	5RSNU13	8RSNU09	8RSNU13	8RSNU18
Cooling Capacity ¹ (BTU/h)	8,300	9,000	11,500	9,600	11,900	16,600
Sensible Cooling Capacity ¹ (BTU/h)	6,600	7,200	9,200	7,700	9,500	11,600
EER	11.6	11.4	10.6	11.2	11.0	9.5
Heating Capacity - Hot Water ² (BTU/h)	16,500	16,500	16,500	16,500	16,500	19,400
Heating Capacity - Steam ² (BTU/h)	18,700	18,700	18,700	18,700	18,700	20,200
Voltage	115	115	115	208/230	208/230	208/230
Cooling Mode Current (Amps)	6.2	6.9	9.4	4.1	5.2	8.4
Cooling Mode Power (Watts)	716	789	1,085	857	1,082	1,747
MCA	8.5	9.6	12.1	5.3	6.6	9.0
MOCP	15	15	15	15	15	15
Airflow AC High Speed (CFM)	380	380	400	380	400	540
Airflow AC Low Speed (CFM)	300	300	350	300	350	450
Airflow Outside (CFM)	60	60	60	60	60	60
Airflow Extra Outside (CFM)	110	110	110	110	110	110
Weight (lbs)	130/141	134/145	134/145	134/145	134/145	137/148

SPECIFICATION NOTES:

1. Cooling mode performance ratings are in compliance with AHRI standard 310/380 and CSA standard 744.
2. Hot water heating capacity rated @ EAT = 65 °F, EWT=200 °F, Flow Rate = 2GPM
3. Steam heating capacity rated @ EAT = 65 °F, Inlet Steam Pressure = 2 PSIG
4. Performance data based on R32 green refrigerant.

IMPORTANT: Additional voltages and alternate electric heat and heat pump options are available. For performance data and other available options please consult factory. Accessories are optional. Deviations from standard accessories may affect performance; louver requires 70% free area per original OEM specification; room enclosures must provide sufficient return air, free flowing supply air and must be properly sealed to prevent air recirculation; any non-standard components or accessories must be reviewed and approved by Ice Air or approved distributor.

RS16 Series



Ice Air's RS16 Series Replacement and Retrofit units are high energy efficiency PTACs. Designed from the ground up for ultra-high efficiency, they incorporate advanced LEEDs features in a durable and user-friendly package.

Features:

- Ultra-high efficiency – EERs to 8.9
- Advanced tangential indoor blower provides balanced air flow
- Whisper quiet sound levels
- Standard programmable digital touchpad controls
- 5/2 or 7 day programming
- Heavy duty, commercial-grade construction throughout
- G90 galvanized steel construction, powder-coated drain and base pans
- Furniture-grade, powder-coated cabinetry



Replaces:

- American Air Filter (AAF) – Type 16
- American Standard – Type 45
- McQuay – Type 16, PNES
- Singer – ENR
- Islandaire – 16
- Retroaire – RC/RH10
- Remington – Type 16

SERIES MODEL #	5RS1613	8RS1613	8RS1618
Cooling Capacity ¹ (BTU/h)	11,500	12,100	15,900
EER	8.9	9.0	8.1
Heating Capacity - Hot Water ² (BTU/h)	15,500	15,500	15,500
Heating Capacity - Steam ³ (BTU/h)	18,700	18,700	18,700
Electric Heating MAX (kW)	1.5	4.3	4.3
Voltage	115	208/230	208/230
Amperage	11.2	6.5	9.4
Watts	1,292	1,344	1,963
Airflow AC High Speed (CFM)	430	430	450
Airflow AC Low Speed (CFM)	350	350	360
Airflow Heat (CFM)	240	240	250
Airflow Outside (CFM)	60	60	60
Weight Net/Ships (lbs)	121/138	121/138	141/157

SPECIFICATION NOTES:

1. Cooling mode performance ratings are in compliance with AHRI standard 310/380 and CSA standard 744.
2. BTUH @ 200 °F. E.W.T.; 65 °F. E.A.T. & 2 G.P.M. flow rate.
3. BTUH @ 2 PSIG STEAM & 65°F. E.A.T.
4. Performance data based on R32 green refrigerant.

IMPORTANT: Additional voltages and alternate electric heat and heat pump options are available. For performance data and other available options please consult factory. Accessories are optional. Deviations from standard accessories may affect performance; louver requires 70% free area per original OEM specification; room enclosures must provide sufficient return air, free flowing supply air and must be properly sealed to prevent air recirculation; any non-standard components or accessories must be reviewed and approved by Ice Air or approved distributor.

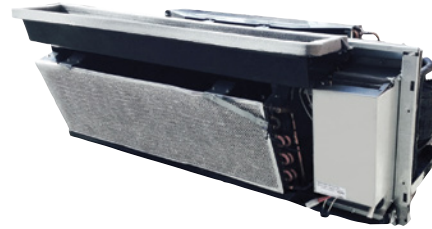
RSAN Series



Ice Air's RSAN Series New Construction and Replacement units are high energy efficiency PTACs. Designed from the ground up for ultra-high efficiency, they incorporate advanced LEEDs features in a durable and user-friendly package.

Features:

- Ultra-high efficiency – EERs to 11.9
- Advanced tangential indoor blower provides balanced air flow
- Whisper quiet sound levels
- Standard programmable digital touchpad controls
- 5/2 or 7 day programming
- Heavy duty, commercial-grade construction throughout
- G90 galvanized steel construction, powder-coated drain and base pans
- Furniture-grade, powder-coated cabinetry



Replaces:

McQuay – PDNS, PDAN, PGAN, N, NH
Singer – N, NH
Islandaire – N, NH, NE

SERIES MODEL #	5RSAN09	5RSAN13	8RSAN09	8RSAN13	8RSAN17
Cooling Capacity ¹ (BTU/h)	9,200	12,000	9,400	12,300	16,900
EER	11.5	11.3	11.5	11.5	10.0
Heating Capacity - Hot Water ² (BTU/h)	17,200	17,200	17,200	17,200	19,500
Heating Capacity - Steam ³ (BTU/h)	18,700	18,700	18,700	18,700	20,200
Electric Heating MAX (kW)	1.5	1.5	4.3	4.3	4.3
Voltage	115	115	208/230	208/230	208/230
Amperage	7.0	9.2	3.9	5.1	8.1
Watts	800	1062	817	1070	1690
Airflow AC High Speed (CFM)	400	450	400	450	525
Airflow AC Low Speed (CFM)	280	315	280	315	368
Airflow Heat High Speed (CFM)	280	315	280	315	368
Airflow Heat Low Speed (CFM)	210	210	210	210	210
Weight Net/Ship (lbs)	117/133	117/133	117/133	117/133	141/157

SPECIFICATION NOTES:

1. Cooling mode performance ratings are in compliance with AHRI standard 310/380 and CSA standard 744.
2. BTUH @ 200°F. E.W.T.; 65°F. E.A.T. & 2 G.P.M. flow rate.
3. BTUH @ 2 PSIG STEAM & 65°F. E.A.T.
4. Performance data based on R32 green refrigerant.

IMPORTANT: Additional voltages and alternate electric heat and heat pump options are available. For performance data and other available options please consult factory. Accessories are optional. Deviations from standard accessories may affect performance; louver requires 70% free area per original OEM specification; room enclosures must provide sufficient return air, free flowing supply air and must be properly sealed to prevent air recirculation; any non-standard components or accessories must be reviewed and approved by Ice Air or approved distributor.

RSCC Series



Ice Air's RSCC Series Replacement and Retrofit units are high energy efficiency PTACs. Designed from the ground up for ultra-high efficiency, they incorporate advanced LEEDs features in a durable and user-friendly package.

Features:

- Advanced tangential indoor blower provides balanced air flow
- Whisper quiet sound levels
- Standard programmable digital touchpad controls
- 5/2 or 7 day programming
- Heavy duty, commercial-grade construction throughout
- G90 galvanized steel construction, powder-coated drain and base pans
- Furniture-grade, powder-coated cabinetry



RSCC Replaces:

Ice-Cap – RSCT
Ice Air – RSET

SERIES MODEL #	5RSCC09	5RSCC13	8RSCC13	8RSCC18
Cooling Capacity ¹ (BTU/h)	9,100	12,100	12,700	16,400
EER	10.0	10.6	10.7	9.1
Heating Capacity - Hot Water ² (BTU/h)	16,500	16,500	16,500	19,400
Heating Capacity - Steam ³ (BTU/h)	18,700	18,700	18,700	20,000
Electric Heating MAX (kW)	1.5	1.5	4.3	4.3
Voltage	115	115	208	208
Amperage	7.9	9.9	5.7	8.7
Watts	910	1,142	1,187	1,802
Airflow AC High Speed (CFM)	370	370	430	480
Airflow AC Low Speed (CFM)	260	260	330	330
Airflow Outside ⁴ (CFM)	60	60	60	60
Airflow Extra Outside (CFM)	110	110	110	110
Weight Net/Ship (lbs)	117/133	124/138	124/138	141/157

SPECIFICATION NOTES:

1. Cooling mode performance ratings are in compliance with AHRI standard 310/380 and CSA standard 744.
2. BTUH @ 200 °F. E.W.T.; 65 °F. E.A.T. & 2 G.P.M. flow rate.
3. BTUH @ 2 PSIG STEAM & 65 °F. E.A.T.
4. Optional full time fresh air (OAM).
5. Performance data based on R32 green refrigerant.

IMPORTANT: Additional voltages and alternate electric heat and heat pump options are available. For performance data and other available options please consult factory. Accessories are optional. Deviations from standard accessories may affect performance; louver requires 70% free area per original OEM specification; room enclosures must provide sufficient return air, free flowing supply air and must be properly sealed to prevent air recirculation; any non-standard components or accessories must be reviewed and approved by Ice Air or approved distributor.

RSCM/A/B/C Series



Ice Air's RSCM/A/B/C Series Replacement and Retrofit units are high energy efficiency PTACs. Designed from the ground up for ultra-high efficiency, they incorporate advanced LEEDs features in a durable and user-friendly package.

Features:

- Ultra-high efficiency – EERs to 10.5
- Advanced tangential indoor blower provides balanced air flow
- Whisper quiet sound levels
- Standard programmable digital touchpad controls
- 5/2 or 7 day programming
- Heavy duty, commercial-grade construction throughout
- G90 galvanized steel construction, powder-coated drain and base pans
- Furniture-grade, powder-coated cabinetry



RSCM/A Replaces:

ClimateMaster 702, 703, 704
 Friedrich – 702, 703, 704
 Weil-McClain – 702, 703, 704
 Islandaire – CM
 Retroaire – RC/RH20

RSCM/B and RSCM/C Replaces:

ClimateMaster – 700 AD
 Friedrich – 700 AD
 Weil-McClain – 700 AD
 Islandaire – AD
 Retroaire – RC/RH20

SERIES MODEL #	5RSCM13	8RSCM13	8RSCM18
Cooling Capacity ¹ (BTU/h)	11,600	12,400	16,000
EER	8.5	9.0	8.2
Heating Capacity - Hot Water ² (BTU/h)	16,500	16,500	16,500
Heating Capacity - Steam ³ (BTU/h)	18,700	18,700	18,700
Electric Heating MAX (kW)	1.5	4.3	4.3
Voltage	115	208/230	208/230
Amperage	11.9	6.6	9.4
Watts	1,365	1,378	1,951
Airflow AC High Speed (CFM)	370	430	480
Weight Net/Ship (lbs)	117/133	124/138	141/157

SPECIFICATION NOTES:

1. Cooling mode performance ratings are in compliance with AHRI standard 310/380 and CSA standard 744.
2. BTUH @ 200 °F. E.W.T.; 65 °F. E.A.T. & 2 G.P.M. flow rate.
3. BTUH @ 2 PSIG STEAM & 65 °F. E.A.T.
4. Performance data based on R32 green refrigerant.

IMPORTANT: Additional voltages and alternate electric heat and heat pump options are available. For performance data and other available options please consult factory. Accessories are optional. Deviations from standard accessories may affect performance; louver requires 70% free area per original OEM specification; room enclosures must provide sufficient return air, free flowing supply air and must be properly sealed to prevent air recirculation; any non-standard components or accessories must be reviewed and approved by Ice Air or approved distributor.

RSEA Series



Ice Air's RSEA Series Replacement and Retrofit units are high energy efficiency PTACs. Designed from the ground up for ultra-high efficiency, they incorporate advanced LEEDs features in a durable and user-friendly package.

Features:

- Ultra-high efficiency – EERs to 9.4
- Advanced tangential indoor blower provides balanced air flow
- Whisper quiet sound levels
- Standard programmable digital touchpad controls
- 5/2 or 7 day programming
- Heavy duty, commercial-grade construction throughout
- G90 galvanized steel construction, powder-coated drain and base pans
- Furniture-grade, powder-coated cabinetry



Replaces:

McQuay – EA, ES, RS
 Remington – EA, ES, RS
 Singer – EA, ES, RS
 Islandaire – ED
 Retroaire – RC/RH35

SERIES MODEL #	5RSEA13	8RSEA13	8RSEA18
Cooling Capacity ¹ (BTU/h)	11,400	11,800	15,600
EER	9.0	9.1	7.9
Heating Capacity - Hot Water ² (BTU/h)	16,500	16,500	19,400
Heating Capacity - Steam ³ (BTU/h)	15,100	15,100	18,100
Electric Heating MAX (kW)	1.5	4.3	4.3
Voltage	115	208/230	208/230
Amperage	11.0	6.2	9.5
Watts	1,267	1,297	1,975
Airflow AC High Speed (CFM)	370	370	430
Airflow AC Low Speed (CFM)	260	260	260
Airflow Outside (CFM)	60	60	60
Airflow Extra Outside (CFM)	110	110	110
Weight Net/Ship (lbs)	120/136	120/136	130/146

SPECIFICATION NOTES:

1. Cooling mode performance ratings are in compliance with AHRI standard 310/380 and CSA standard 744.
2. BTUH @ 200 °F. E.W.T.; 65 °F. E.A.T. & 2 G.P.M. flow rate.
3. BTUH @ 2 PSIG STEAM & 65 °F. E.A.T.
4. Performance data based on R32 green refrigerant.

IMPORTANT: Additional voltages and alternate electric heat and heat pump options are available. For performance data and other available options please consult factory. Accessories are optional. Deviations from standard accessories may affect performance; louver requires 70% free area per original OEM specification; room enclosures must provide sufficient return air, free flowing supply air and must be properly sealed to prevent air recirculation; any non-standard components or accessories must be reviewed and approved by Ice Air or approved distributor.

RSF Series



Ice Air's RSF Series Replacement and Retrofit units are high energy efficiency PTACs. Designed from the ground up for ultra-high efficiency, they incorporate advanced LEEDs features in a durable and user-friendly package.

Features:

- Ultra-high efficiency – EERs to 9.5
- Advanced tangential indoor blower provides balanced air flow
- Whisper quiet sound levels
- Standard programmable digital touchpad controls
- 5/2 or 7 day programming
- Heavy duty, commercial-grade construction throughout
- G90 galvanized steel construction, powder-coated drain and base pans
- Furniture-grade, powder-coated cabinetry



Replaces:

- Fedders – MaxiZone
- Islandaire – MX
- Retroaire – RC40

SERIES MODEL #	5RSF13	8RSF16
Cooling Capacity ¹ (BTU/h)	10,900	14,200
EER	9.0	7.9
Heating Capacity - Hot Water ² (BTU/h)	15,500	15,500
Heating Capacity - Steam ³ (BTU/h)	18,700	18,700
Electric Heating MAX (kW)	1.5	4.3
Voltage	115	208/230
Amperage	10.6	8.6
Watts	1,211	1,797
Airflow AC High Speed (CFM)	350	400
Airflow AC Low Speed (CFM)	280	310
Airflow Outside (CFM)	60	60
Weight Net/Ship (lbs)	117/133	121/138

SPECIFICATION NOTES:

1. Cooling mode performance ratings are in compliance with AHRI standard 310/380 and CSA standard 744.
2. BTUH @ 200 °F. E.W.T.; 65 °F. E.A.T. & 2 G.P.M. flow rate.
3. BTUH @ 2 PSIG STEAM & 65 °F. E.A.T.
4. Performance data based on R32 green refrigerant.

IMPORTANT: Additional voltages and alternate electric heat and heat pump options are available. For performance data and other available options please consult factory. Accessories are optional. Deviations from standard accessories may affect performance; louver requires 70% free area per original OEM specification; room enclosures must provide sufficient return air, free flowing supply air and must be properly sealed to prevent air recirculation; any non-standard components or accessories must be reviewed and approved by Ice Air or approved distributor.

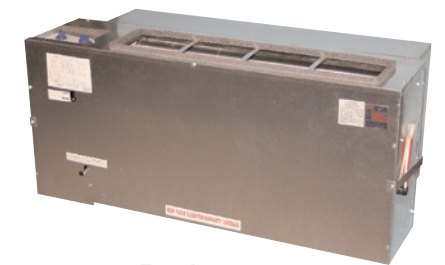
RSK Series



Ice Air's RSK Series Replacement and Retrofit units are high energy efficiency PTACs. Designed from the ground up for ultra-high efficiency, they incorporate advanced LEEDs features in a durable and user-friendly package.

Features:

- Ultra-high efficiency – EERs to 9.5
- Advanced tangential indoor blower provides balanced air flow
- Whisper quiet sound levels
- Standard programmable digital touchpad controls
- 5/2 or 7 day programming
- Heavy duty, commercial-grade construction throughout
- G90 galvanized steel construction, powder-coated drain and base pans
- Furniture-grade, powder-coated cabinetry



Replaces:

- Ice-Cap – RSK
- Islandaire – RK
- Retroaire – RC/RH22

SERIES MODEL #	5RSK09	5RSK13	8RSK13	8RSK18
Cooling Capacity ¹ (BTU/h)	9,600	12,400	12,800	17,400
EER	10.4	10.3	9.7	9.2
Heating Capacity - Hot Water ² (BTU/h)	16,500	16,500	16,500	19,400
Heating Capacity - Steam ³ (BTU/h)	18,700	18,700	18,700	20,200
Electric Heating MAX (kW)	1.5	1.5	4.3	4.3
Voltage	115	115	208/230	208/230
Amperage	8.0	10.5	6.3	9.1
Watts	923	1204	1320	1891
Airflow AC High Speed (CFM)	350	400	450	450
Airflow AC Low Speed (CFM)	260	350	350	370
Airflow Outside ⁴ (CFM)	60	60	60	60
Airflow Extra Outside (CFM)	110	110	110	110
Weight Net/Ship (lbs)	117/133	117/133	117/133	141/157

SPECIFICATION NOTES:

1. Cooling mode performance ratings are in compliance with AHRI standard 310/380 and CSA standard 744.
2. BTUH @ 200 °F. E.W.T.; 65 °F. E.A.T. & 2 G.P.M. flow rate.
3. BTUH @ 2 PSIG STEAM & 65 °F. E.A.T.
4. Optional full time fresh air (OAM).
5. Performance data based on R32 green refrigerant.

IMPORTANT: Additional voltages and alternate electric heat and heat pump options are available. For performance data and other available options please consult factory. Accessories are optional. Deviations from standard accessories may affect performance; louver requires 70% free area per original OEM specification; room enclosures must provide sufficient return air, free flowing supply air and must be properly sealed to prevent air recirculation; any non-standard components or accessories must be reviewed and approved by Ice Air or approved distributor.

RSMK Series



Ice Air's RSMK Series Replacement and Retrofit units are high energy efficiency PTACs. Designed from the ground up for ultra-high efficiency, they incorporate advanced LEEDs features in a durable and user-friendly package.

Features:

- Ultra-high efficiency – EERs to 9.1
- Advanced tangential indoor blower provides balanced air flow
- Whisper quiet sound levels
- Standard programmable digital touchpad controls
- 5/2 or 7 day programming
- Heavy duty, commercial-grade construction throughout
- G90 galvanized steel construction, powder-coated drain and base pans
- Furniture-grade, powder-coated cabinetry



Replaces:

- Singer – K, EK
- Remington – K, EK
- McQuay – K, EK, RK
- Ice-Cap – RSK/K, RSMK

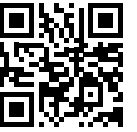
SERIES MODEL #	5RSMK09	8RSMK13	8RSMK16
Cooling Capacity ¹ (BTU/h)	11,100	12,500	13,500
EER	9.3	8.3	8.1
Heating Capacity - Hot Water ² (BTU/h)	16,500	16,500	19,400
Heating Capacity - Steam ³ (BTU/h)	18,700	18,700	20,000
Electric Heating MAX (kW)	1.5	4.3	4.3
Voltage	115	208/230	208/230
Amperage	10.4	7.2	8.0
Watts	1194	1506	1667
Airflow AC High Speed (CFM)	370	430	430
Airflow AC Low Speed (CFM)	350	370	370

SPECIFICATION NOTES:

1. Cooling mode performance ratings are in compliance with AHRI standard 310/380 and CSA standard 744.
2. BTUH @ 200 °F. E.W.T.; 65 °F. E.A.T. & 2 G.P.M. flow rate.
3. BTUH @ 2 PSIG STEAM & 65 °F. E.A.T.
4. Performance data based on R32 green refrigerant.

IMPORTANT: Additional voltages and alternate electric heat and heat pump options are available. For performance data and other available options please consult factory. Accessories are optional. Deviations from standard accessories may affect performance; louver requires 70% free area per original OEM specification; room enclosures must provide sufficient return air, free flowing supply air and must be properly sealed to prevent air recirculation; any non-standard components or accessories must be reviewed and approved by Ice Air or approved distributor.

RSZ Series



Ice Air's RSZ Series Replacement and Retrofit units are high energy efficiency PTACs. Designed from the ground up for ultra-high efficiency, they incorporate advanced LEEDs features in a durable and user-friendly package.

Features:

- Ultra-high efficiency – EERs to 8.9
- Advanced tangential indoor blower provides balanced air flow
- Whisper quiet sound levels
- Standard programmable digital touchpad controls
- 5/2 or 7 day programming
- Heavy duty, commercial-grade construction throughout
- G90 galvanized steel construction, powder-coated drain and base pans
- Furniture-grade, powder-coated cabinetry



Replaces:

- Cool Heat – RM
- Embassy – Weather Twin
- TPI – RaMATIC
- ZoneAire – RM, SC
- Islandaire – RM
- Retroaire – RC/RH20

SERIES MODEL #	5RSZ13	8RSZ13	8RSZ18
Cooling Capacity ¹ (BTU/h)	11,500	12,400	15,800
EER	8.5	8.9	7.9
Heating Capacity - Hot Water ² (BTU/h)	16,500	16,500	19,400
Heating Capacity - Steam ³ (BTU/h)	18,700	18,700	20,200
Electric Heating MAX (kW)	1.5	4.3	4.3
Voltage	115	208/230	208/230
Amperage	11.8	6.7	9.6
Watts	1,353	1,394	2,000
Airflow AC High Speed (CFM)	370	430	430
Airflow AC Low Speed (CFM)	260	330	330

SPECIFICATION NOTES:

1. Cooling mode performance ratings are in compliance with AHRI standard 310/380 and CSA standard 744.
2. BTUH @ 200 °F. E.W.T.; 65 °F. E.A.T. & 2 G.P.M. flow rate.
3. BTUH @ 2 PSIG STEAM & 65 °F. E.A.T.
4. Performance data based on R32 green refrigerant.

IMPORTANT: Additional voltages and alternate electric heat and heat pump options are available. For performance data and other available options please consult factory. Accessories are optional. Deviations from standard accessories may affect performance; louver requires 70% free area per original OEM specification; room enclosures must provide sufficient return air, free flowing supply air and must be properly sealed to prevent air recirculation; any non-standard components or accessories must be reviewed and approved by Ice Air or approved distributor.



PTAC Replacement Models by Manufacturer

Quality, value and performance. Ice Air's Exactfit™ PTACs offer superior performance, quality manufacturing and customer value. Our models are a no-hassle ExactFit™ replacement for your existing equipment. Ice Air delivers the full complement of performance and excellence.

- Reliability
- Energy efficiency
- Ease of operation
- Low cost, easy installation
- Quiet comfort

Manufacturer	Model/Series	Ice Air Model
American Air Filter (AAF)	Type 25	RS41
	Type 16	RS16
American Standard	Type 41	RS41
	Type 45	RS16
ClimateMaster	700 AD	RSCM/B* or C*
	702,703,704	RSCM/A
Cool Heat	RM	RSZ
Embassy	Weather Twin	RSZ
Fedders	Maxizone	RSF
Friedrich	700 AD	RSCM/B* or C*
	702,703,704	RSCM/A
Ice-Cap ICE-CAP	RSK	RSK
	RSCT	RSCC
	RSCT-ZS	RSCC-ZS
Islandaire	N, NH	RSAN
	AD	RSCM/B* or C*
	CM	RSCM/A
	ED	RSEA
	JK	RSCC-JK
	KF	RSMK, RSK/K
	NE	RSAN
	MX	RSF
	RK	RSK
	RM	RSZ
	RT	RSCC
	WL	WL
	16	RS16
	41	RS41

Manufacturer	Model/Series	Ice Air Model
McQuay	PDES**, PDNS, PDAN, PGAN	RSAN
	EA, ES, RS	RSEA
	N, NH, PDNS	RSAN
	PNES, ENR	RS16
Remington	K, EK, RK	RSMK
	EA, ES, RS	RSEA
	K, EK	RSMK
	RetroAire	RC15
RC40		RSF
RC/RH10		RS16
RC/RH20		RSZ, RSCM/A
RC/RH22		RSK
RC/RH35		RSEA
Singer	RC/RH60	RSMK, RSK/K
	RC/RH90	RSCM/B* or C*
	EA, ES, RS	RSEA
	N, NH	RSAN
	K, EK	RSMK, RSK/K
	TYPE 16	RS16
SlantFin	JK	RSCC-JK
W, Wenig	WL "Coffin"	WL
	IW "Step Up"	RSIW

Replacement compatibility based on typical configurations. Modifications may be required based on OEM variations.

* Control box configuration must be specified
** May require new cabinet



Thermostat Options

Ice Air's thermostats for its lines of PTACs, WSHPs, Fan Coils, SPACs and Hybrid Water-Cooled ACs are designed for ease-of-use and efficiency. Unit-mounted controls are standard (accessible through an attractive brushed aluminum control door). Optional wall-mounted remote controls are available.



Habitat Wireless Thermostat

- Attractive, user-friendly design
- Wireless or wired connection
- Mobile app provides full control from anywhere, anytime
- Wi-Fi enabled for Smart App control options
- Works with Alexa or Google Assistant



Programmable Digital Touchscreen Thermostat

- Streamlined touchscreen display
- Intuitive design makes configuration fast and easy



Programmable Digital LCD Thermostat

- Easy-to-read digital display
- Compact, attractive design
- User-friendly for quick configuration



Non-Programmable LCD Digital Touch Pad Thermostat

- Touchpad interface controls basic functions
- Designed for simple operation



Non-Programmable LED Digital Touch Pad Thermostat

- Touchpad interface controls basic functions
- Designed for simple operation



Manual Temperature and Fan Speed Dial Thermostat

- Straightforward design for controlling basic functions
- Allows for easy thermostatic control

for FCVE/FCVC only



Manual Temperature and Mode Dial Thermostat

- Designed for Packaged Terminal Units
- Simple to operate
- Provides basic control functions

for PTAC/PTHP only

PTAC



INNOVATIONS TO BOOST YOUR PTAC PERFORMANCE!

Breathe fresh with



- XstreamAir provides a big boost of ventilation air (15 to 50-cfm; factory adjustable)
- It eliminates the need for separate make-up air systems or uncontrolled window “trickle vents”
- Effective ventilation option that is more cost effective than centralized systems
- An easy path for code compliance
- Available accessory on all Ice Air PTAC, SPAC, FCU, WSHP, WCAC and Vertical Stack VRF products
- Chassis mounted switch to enable/disable fan operation
- Optional motorized damper for freeze protection (used with hot water heating applications)

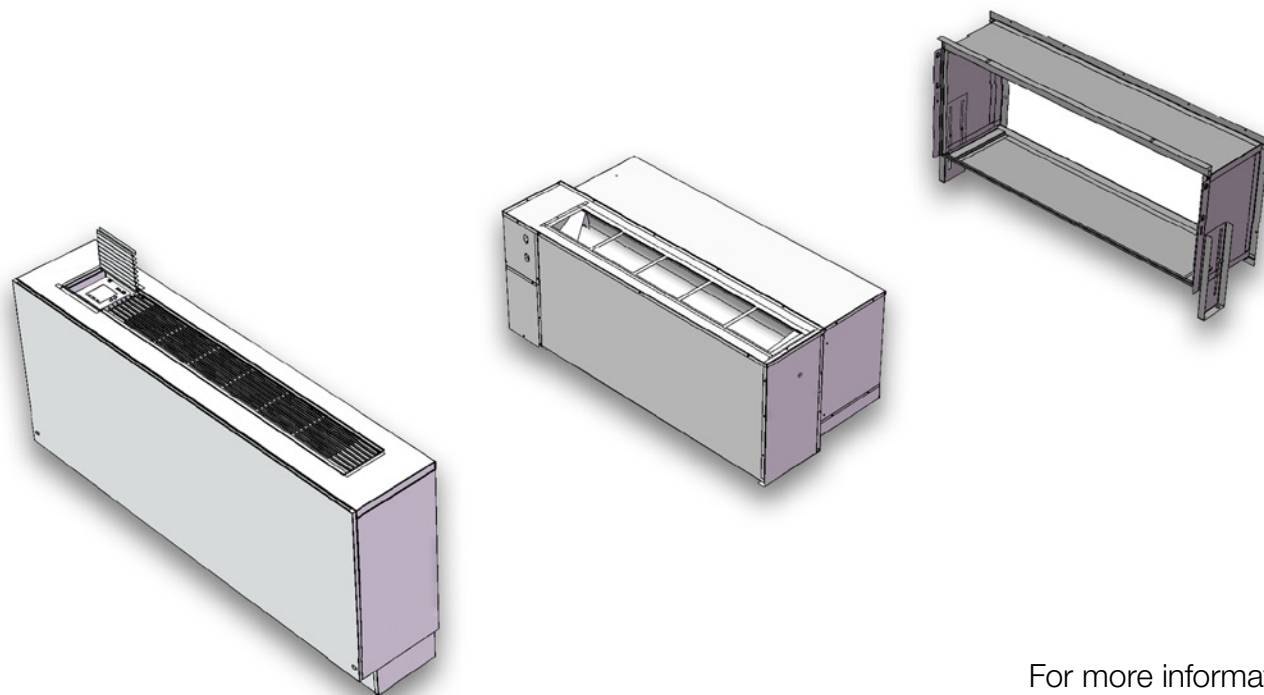
XstreamAir adds a fan assist module to the PTAC that provides filtered fresh air 24/7.

Enjoy peace and quiet with



- SoundShield keeps the noise out
- Proven Performance: OITC tested (Outdoor-to-Indoor Transmission Class) delivering the highest industry rating
- The SoundShield system incorporates a multi-layer firewall construction to the PTAC chassis to reduce ambient noise into the space.
- Approved for environmental remediation
- Improved seals and gaskets

SoundShield reduces outdoor to indoor noise transmission by ~10dB; cutting the sound transmission in half.



For more information visit www.ice-air.com or call **877-ICE-AIR-1**



Get Electrified Using Building Electrification and Ice Air

Whether driven by corporate policy or local greenhouse gas emission legislation, the movement to reduce carbon dioxide emissions – also known as decarbonization – is gaining momentum. As building owners explore ways to reduce reliance on fossil fuels and meet increasingly stringent environmental requirements, **building electrification** has emerged as a proven strategy for reducing emissions while increasing efficiency and lowering operating costs. Building electrification is the process of replacing existing technologies that rely on fossil fuels – such as space heating systems – with newer technologies such as heat pumps that use electricity as the energy source for both heating and cooling.

Numerous states around the U.S. – including California, New York, Washington DC, and others – have adopted regulatory policies aimed at reducing greenhouse gas emissions. Such regulations stress the role of electrification in decarbonizing the built environment and have wide-ranging implications for utilities, building engineers and architects, OEMs and building owners.

As an established HVAC original equipment manufacturer, Ice Air has been ahead of the of building electrification and decarbonization movement for decades. We're proud to leading the way and usher in a better tomorrow with innovative, reliable and efficient systems – all designed to help building owners make the transition to a greener, efficient and sustainable future.

Electrified Product Family



RSXC

Packaged Terminal Heat Pump

SPXC

Central Air Conditioner

HPWH

Heat Pump Water Heater - Domestic HW

VSHPG

Geothermal Vertical Stack Heat Pump



Due to Ice Air's ongoing product development programs, the information in this document is subject to change without notice.

Electrified Product Family



* By making energy-saving upgrades today, you can give your building a head start on upcoming changes to city regulations such as NYC Law 97.

RSXC Series*

Cold Climate PTHPs give you the performance of a VRF system with the convenience of a PTAC. Using breakthrough cold climate technology allows Ice Air PTHPs to efficiently provide space heating down to -5°F and below.



RSXC-S Series*

Ice Air's RSXC-S Series Cold Climate heat pumps offer a slim, sleek design and efficiently provide space heating to -5°F and below.



RSXC-DH Series*

RSXC-DH air source heat pumps are compact, with advanced, two-stage dual heating capabilities (partial cold climate operation down to 23°F then supplemental electric heat resistance for increased output).



SPXC Series*

Cold Climate SPHPs are self-contained, concealed, ducted systems. This line of vertical packaged heat pumps serves multiple spaces through concealed ductwork to efficiently provide space heating to -5°F and below.



HPWH Series*

Air-Source Cold Climate Heat Pump Water Heaters capture the free energy in the environment and convert it to hot water. These units are certified to operate down to -13°F.



HPWH-SC Series*

Air-Source Cold Climate heat pump chiller heaters capture free energy in the environment to provide both hot and chilled water. These units are certified to operate down to -13°F.



VSHPGE Geothermal*

Ice Air's Geothermal WSHP is a versatile geothermal heat pump that is available in a range of sizes and configurations for convenient installation. Fully compatible with geothermal conditions, it provides an ideal solution for whisper quiet cooling and heating within a tight footprint.



ICE AIR VRF

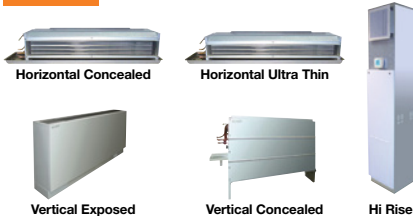
New technologies like Variable Refrigerant Flow (VRF) are on the move. There is no denying the benefits of VRF any longer, and with Ice Air VRF, these benefits are delivered simply and effectively.



Other Products

FCU

Fan Coil Units



This simple and easy cooling and heating solution provides reliable performance, high efficiency, ease of operation, low cost, easy installation, quiet comfort and a variety of solution-based options.

HWCAC

Hybrid Water-Cooled Air Conditioners



HWCACs provide hydronic heat without using the unit's compressor through an innovative system that combines high-efficiency cooling with a hot water coil.

WSHP

Water Source Heat Pumps



WSHPs provide efficient room-by-room comfort. Units function independently and are piped to a central water loop.

PTAC

Packaged Terminal Air Conditioners

PTACs are designed for ultra-high efficiency and comply with LEED® criteria in a durable, user-friendly package. Available for new construction, retrofit and ExactFit™ replacement applications.



NEW! Ice Air CEU Webinar

Learn more about the role HVAC electrification plays in building decarbonization today at www.iceairceu.com.



80 Hartford Avenue,
Mount Vernon, NY 10553
Tel: 877-ICE-AIR-1 (877-423-2471)
Main: 914-668-4700
Fax: 914-668-5643
email: sales@ice-air.com
www.ice-air.com