

## Installation Manual

# FCVC FCVE

## Vertical Concealed/ Vertical Exposed Units

Fan Coil Unit (FCU)





## Contents

- General/Safety Information** ..... 2
- Overview/Application Note/Prerequisite** ..... 3
- Before You Begin** ..... 4
- Installation** ..... 5-6
  - Vertical Concealed Installation ..... 5
  - Vertical Exposed Installation ..... 5
  - Piping Installation ..... 6
  - Filter Installation/Replacement ..... 6
- General Wiring** ..... 7-8
- System Cleaning and Flushing** ..... 9
- Troubleshooting** ..... 10
- System Check List** ..... 11
- Product Nomenclature** ..... 12-14
- Warranty/Contact Information** ..... 16

Thank you for purchasing and installing the Ice Air FCU (Fan Coil Unit). Ice Air is a leading supplier of FCUs, offering superior quality, reliability and efficiency for our customers.

This is a general guide only, and should be treated as such. The information contained in this manual, including but not limited to installation instructions, unit dimensions, and physical/performance data, may vary by project and unit configuration. Ice Air will not be held liable for any information contained in this manual. For questions about installation and unit performance, please contact your local Ice Air representative. Installation and start-up should always be performed by a trained professional.

### ATTENTION INSTALLING PROFESSIONAL

Read this manual and familiarize yourself with the specific terms and safety warnings that must be adhered to before attempting to install or service this unit. Precautions listed are intended as supplemental to existing practices. As a professional, you have an obligation to know the product better than the customer. This includes all safety precautions and related items. It is your responsibility to install the product safely and know it well enough to be able to instruct a customer in its safe use as required.



AHRI Certified® is the trusted mark of performance for heating, air conditioning, water heating, and commercial refrigeration equipment. To find AHRI Certified products, go to [www.ahridirectory.org](http://www.ahridirectory.org).

### **RECOGNIZE THIS SYMBOL AS A SAFETY PRECAUTION.**

**▲ WARNING:** Ice Air will not be responsible for any injury or property damage arising from improper service or service procedures. If you install or perform service on this unit, you assume responsibility for any personal injury or property damage which may result. Many jurisdictions require a license to install or service heating and air conditioning equipment.

**▲ WARNING, HIGH VOLTAGE:** Disconnect all power before servicing or installing unit. Multiple power sources may be present. Failure to do so may cause property damage, personal injury or death.

To ensure that the unit operates safely and efficiently, it must be installed according to these installation instructions and all local codes and ordinances, utilizing the best standards and practices at the time of installation or, in their absence, with the latest edition of the National Electric Code. The proper installation of this unit is described in the following sections. Following the steps in the order presented should ensure proper installation.

Precautions and preparations listed are for general knowledge and to define basic guidelines. Local codes and existing practices should be observed and preformed by a professional. Due to Ice Air's ongoing product development programs, the information in this document is subject to change without notice.

## Overview

Installing the Ice Air Vertical FCU's involves two main components and various accessory components.

## Application Note

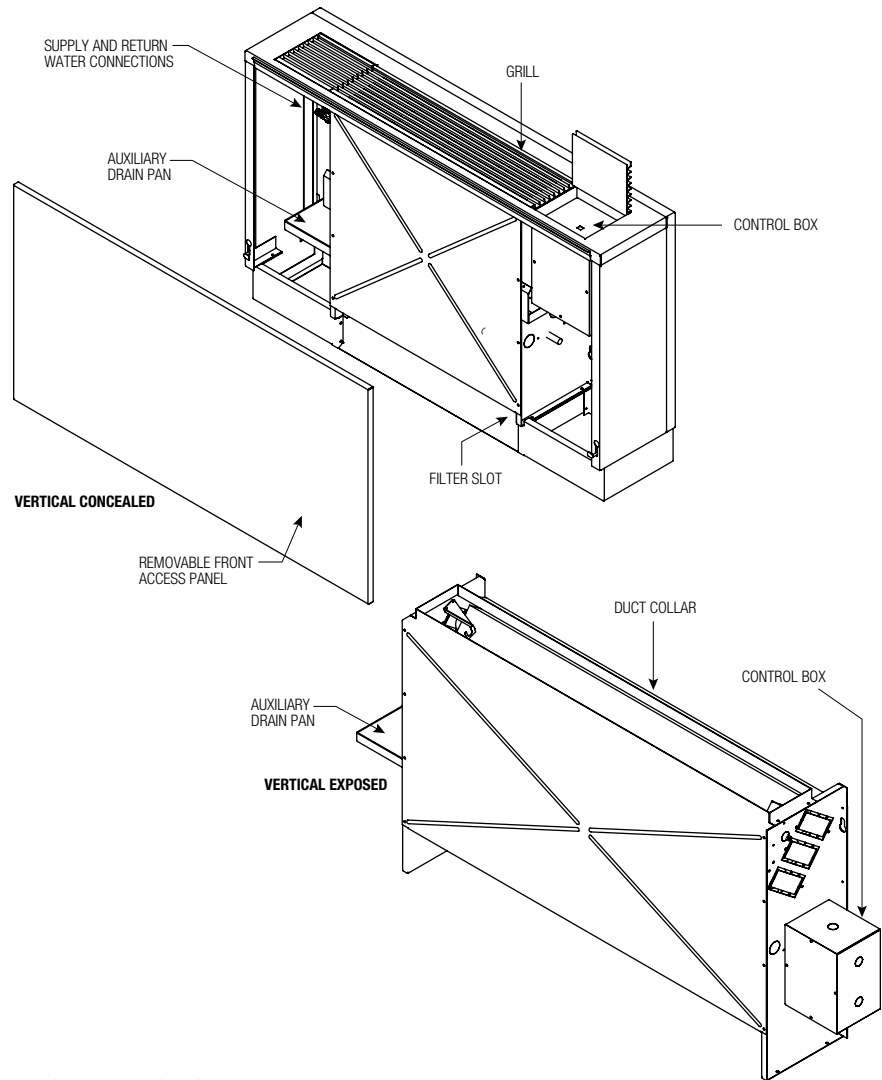
It is important for heating/cooling systems to be properly sized for each application in order to achieve desired temperature and humidity levels. It is highly recommended that a professional engineer match the FCU you are about to install with the building structure and climate.

## Prerequisite

### Vertical Concealed

1. Assess the Ice Air unit to ensure all components are intact upon delivery. Identify whether the unit is (Top Discharge) or (Front Discharge).
2. Minimum 1" clearance within the wall on either left or right side of the unit, measured from the condensate drain pan.
3. Floor should be level in both horizontal directions. Installer must set the unit at zero tolerance or the unit's airflow will be misaligned.
4. Access Panel/ Removable Wall must be supplied by contractor. Ensure the access panel is flush with the wall. If (Front Discharge) a vent must be present on the door to provide airflow into the room.
5. Adequate and continuous water flow must be maintained for proper and safe unit operation. Confirm adequate drainage is also available
6. Dedicated electrical circuitry and power supply is required to properly energize the Ice Air unit. Verify the amperage of the dedicated electrical service to the unit is correct and the unit can reach the power supply.

### Vertical Exposed



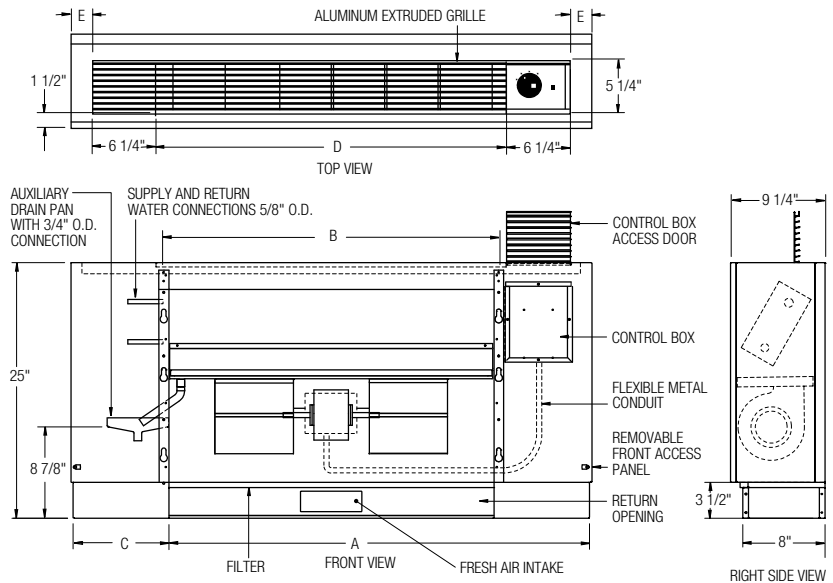
1. Assess the Ice Air unit to ensure all components are intact upon delivery. The Ice Air unit will arrive pre-fabricated with an enclosure. Ensure both the unit and the enclosure are properly attached.
2. Floor should be level in both horizontal directions. Installer must set the unit at zero tolerance or the unit's airflow will be misaligned.
3. Ensure access panel is off before installing the unit. Access panel is shipped with the Ice Air unit and can be removed by pushing the door upwards.
4. Adequate and continuous water flow must be maintained for proper and safe unit operation. Confirm adequate drainage is also available
5. Dedicated electrical circuitry and power supply is required to properly energize the Ice Air unit. Verify the amperage of the dedicated electrical service to the unit is correct and the unit can reach the power supply.

Precautions and preparations listed are for general knowledge and to define basic guidelines. Local codes and existing practices should be observed and performed by a professional.

Due to Ice Air's ongoing product development programs, the information in this document is subject to change without notice.

## Before You Begin

1. Locate the unit where it can evenly distribute air throughout the room without obstructions. Units should be installed no closer than 12" apart when two units are side by side. A vertical clearance of 60" should be maintained between units.
2. Ensure the wall is structurally sound to support the weight of the unit.
3. Ensure adequate drainage is available.
4. Follow all applicable codes for installation.
5. Verify the amperage of the dedicated electrical service to the unit is correct and the unit can reach the power supply.
6. Position the unit so the air filter can be removed easily and required maintenance can be performed without interference.
7. A minimum obstructed distance of 36" should be kept around the unit.



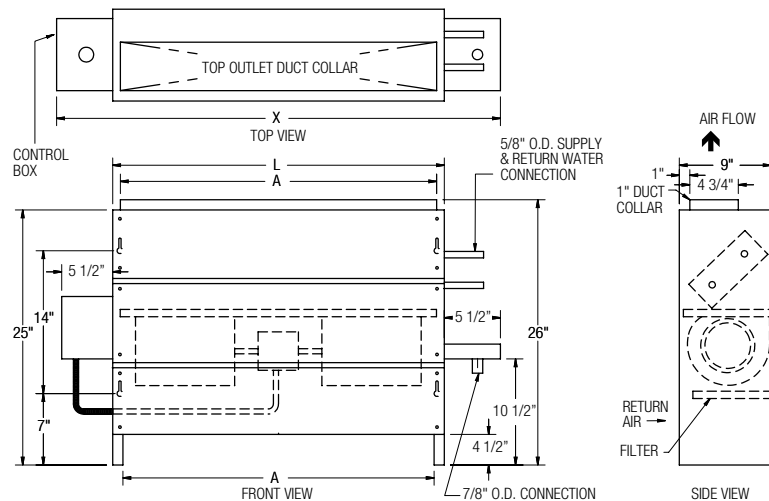
Model	FCVE02	FCVE03	FCVE04	FCVE06	FCVE08	FCVE10	FCVE12
Dimensions	A	41	45	51	61	63	77
	B	22	25	33	42	44	58
	C	10	10-1/2	9-1/2	10	10	10
	D	23-1/4	26-1/4	34-1/4	43-1/4	45-1/4	59-1/4
	E	2-1/2	3	2	2-1/2	2-1/2	2-1/2

**IMPORTANT:** To avoid permanent damage to the unit, DO NOT operate during construction in an open space or as a supplemental heating and cooling source during construction.

## Inspection

1. Upon receipt of the equipment, carefully check the shipment again on the Bill of Lading.
2. Make sure all units have been received.
3. Inspect the packaging for any damage.
4. Ensure that any damage is noted on the delivering carriers Bill of Lading.

NOTE: It is the responsibility of the purchaser to file all necessary claims with the delivering carrier in a timely fashion. Many carriers have a 15 day notice period from receipt of delivery to file any and all claims.



Model	FCVC02	FCVC03	FCVC04	FCVC06	FCVC08	FCVC10	FCVC12
Dimensions	L	22	25	33	42	44	58
	A	20-3/4	23-3/4	31-3/4	40-3/4	42-3/4	56-3/4

FCVC Notes: Coil connections are always on the side opposite the control box.  
 All duct collar dimensions are to the outside of the collar  
 Coil connections are 5/8" O.D. sweat.  
 RH shown, LH opposite

## Installation

### Vertical Concealed

1. Ensure all preparations are met within the “Prerequisite Section.”
2. Within the concealed wall, mark the position of the holes where the unit will attach to. Refer to the submittal for specific dimensions.
3. Embed threaded rods into the indicated holes on the wall.
4. Align the unit’s hanger slots with the threaded rods allowing the unit to lock into position.
5. (TOP DISCHARGE) Ensure the discharge vent is coordinated with the opening above the unit. All leakage **MUST** be sealed.
6. Attach all necessary pipes and wiring connections. Additional ductwork should only be installed if instructed.
7. Install the Access Panel and ensure it is flush with the wall. (FRONT DISCHARGE) Ensure the discharge vent is coordinated with the opening on the Access Panel. All leakage **MUST** be sealed.
8. Run the Unit.

### Vertical Exposed

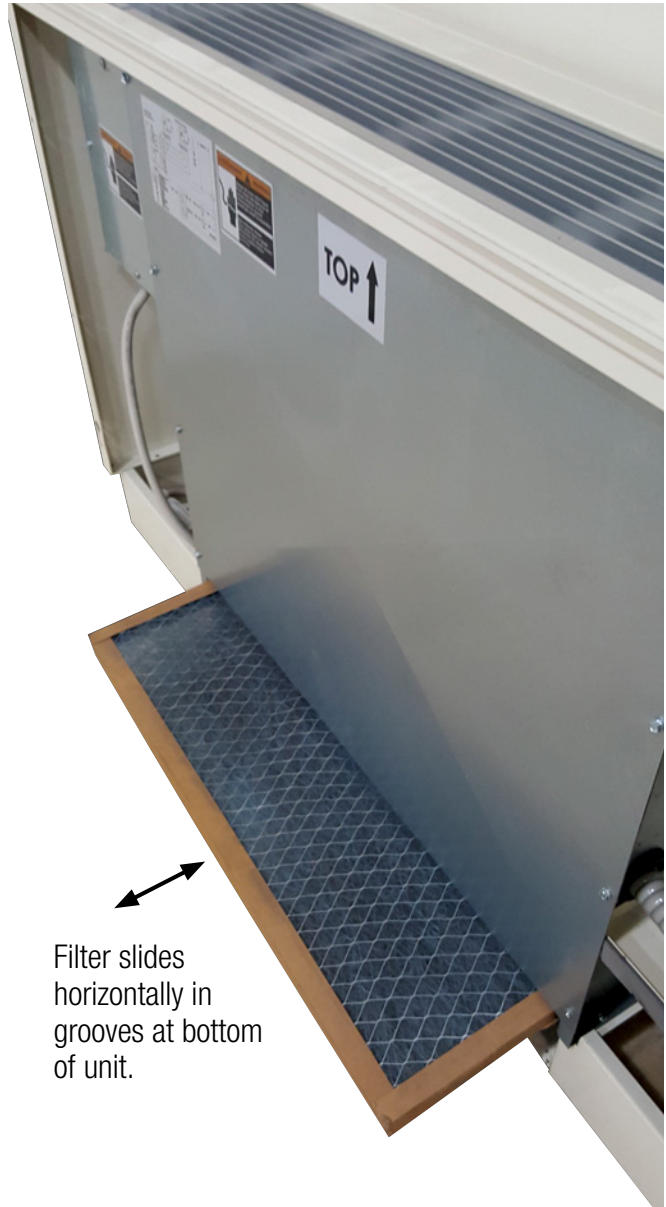
1. Ensure all preparations are met within the “Pre-Requisite Section.”
2. Within the concealed wall, mark the position of the holes where the unit will attach to. Refer to the submittal for specific dimensions.
3. Embed threaded rods into the indicated holes on the wall.
4. Unit should arrive pre-fabricated with an enclosure. Align the unit’s hanger slots with the threaded rods allowing the unit to lock into position.
5. Attach all necessary pipes and wiring connections. Additional ductwork should only be installed if instructed.
6. Install the Access Panel and ensure it is flush with the wall.
7. Run the unit.



## Installation

### Piping

Fan Coils come in either Two Pipe (shown below) or Four Pipe configurations that are connected to the system through the use of a flexible hose or rigid pipe. The piping system should be flushed to remove dirt, pipe shavings, chips and other foreign material prior to operation (refer to System Cleaning and Flushing section). The flow rate is generally set between 2 and 3 GPM per ton of cooling for most applications of water loop fan coils. To ensure proper maintenance and servicing, P/T ports are imperative for temperature and flow verification, as well as performance checks.



### Filter Installation

Each unit is delivered with a filter for the filter rack, which can be found at the bottom of the unit, pictured above. In order to install the filter, slide the piece vertically into the filter slot. Then push the filter back and secure into the lower slot.

### Filter Replacement

The Ice Air unit is delivered with a Disposable Filter. Disposable Filters should be replaced twice every year, before the start of every heating or cooling season. Please contact your local sales representative for replacements.

## General Wiring

### Line Voltage

Wiring, including the electrical ground, must comply with the National Electrical Code as well as all applicable local codes. Refer to the Electrical Data table for fuse sizes. Consult the wiring diagram below for field connections on the right of the electrical diagram located on the back of the unit electrical compartment front panel. All electrical connections must be made by the installing (or electrical) contractor. All final electrical connections must be made with a length of flexible conduit to minimize vibration and sound transmission to the building.

**⚠ WARNING:** Electrical shock can cause personal injury or death while installing or servicing the system. Always turn OFF the main power to system. There may be more than one disconnect switch.

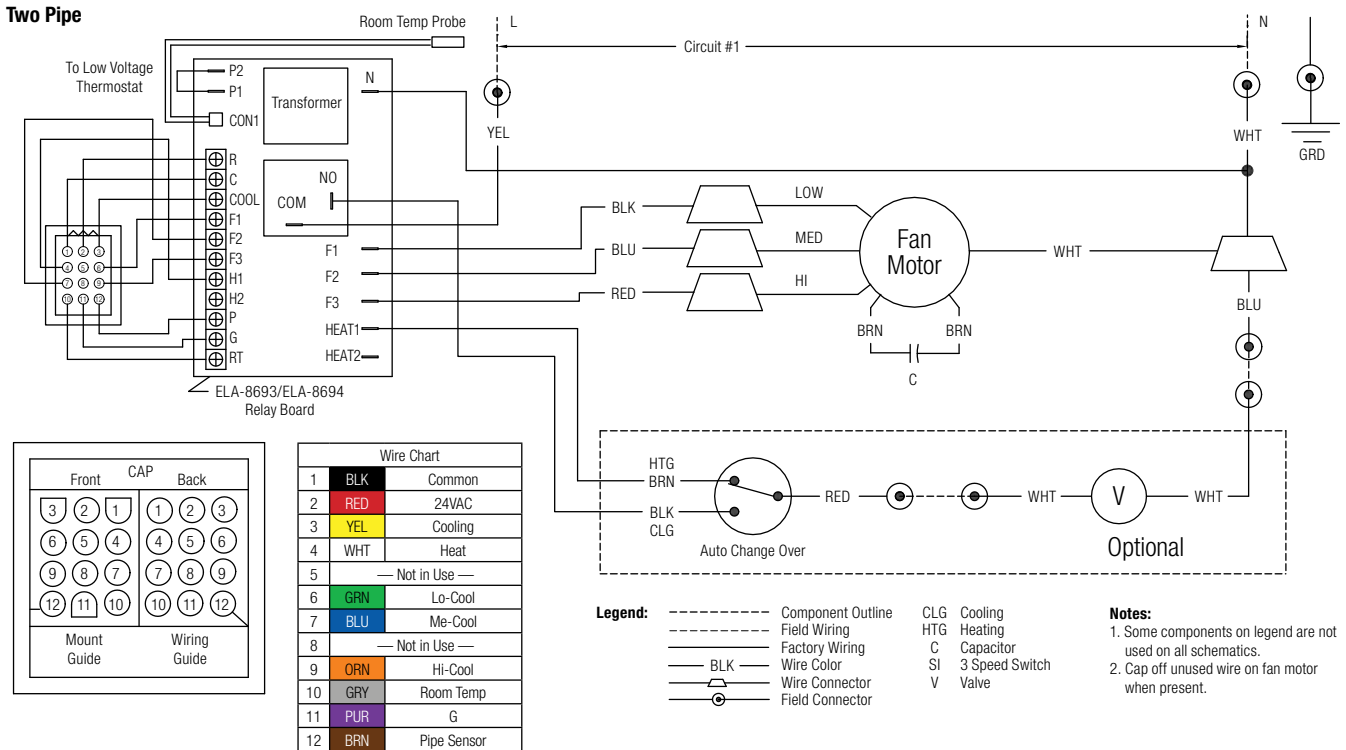
### General Line Voltage Wiring

Be sure the available power is the same voltage and phase shown on the unit serial number plate. Line and low voltage wiring must be done in accordance with local codes or the National Electric Code, whichever is applicable.

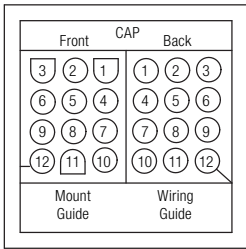
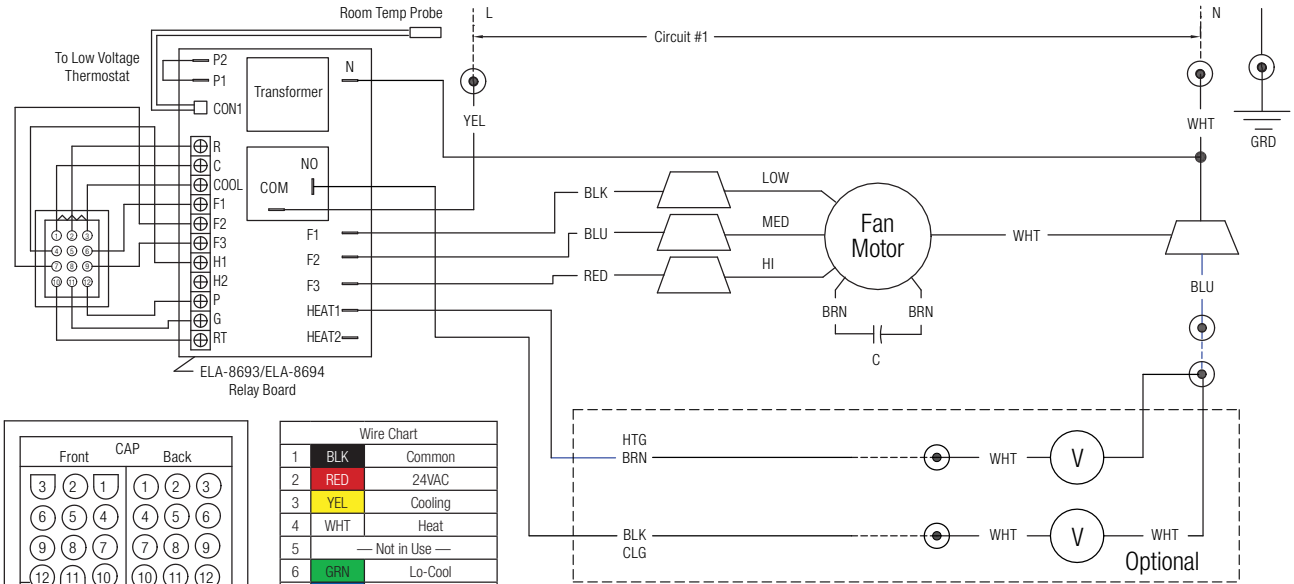
### Power Connection

**Units equipped with disconnect:** Connect incoming line voltage to the disconnect switch and connect ground wire to the ground lug provided inside the electrical compartment.

**Units without disconnect:** Line voltage connection is made by connecting the incoming line voltage wires to the terminal block.



### Four Pipe

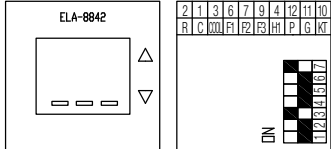


Wire Chart		
1	BLK	Common
2	RED	24VAC
3	YEL	Cooling
4	WHT	Heat
5	—	Not in Use
6	GRN	Lo-Cool
7	BLU	Me-Cool
8	—	Not in Use
9	ORN	Hi-Cool
10	GRY	Room Temp
11	PUR	G
12	BRN	Pipe Sensor

- Legend:**
- Component Outline
  - Field Wiring
  - Factory Wiring
  - BLK — Wire Color
  - GRY — Wire Connector
  - PUR — Field Connector
  - CLG Cooling
  - HTG Heating
  - C Capacitor
  - SI 3 Speed Switch
  - V Valve

- Notes:**
- Some components on legend are not used on all schematics.
  - Cap off unused wire on fan motor when present.

Evaporator speeds configuration  
 Cooling – HI or MED  
 Heating – MED or LOW





## System Cleaning and Flushing

Cleaning and flushing the unit is the most important step to ensure proper start-up and continued efficient operation of the system. Follow the instructions below to properly clean and flush the system:

1. Verify that electrical power to the unit is OFF.
2. Verify that supply and return riser service valves are closed at each unit.
3. Fill the system with water, leaving the air vents open. Bleed all air from the system, but do not allow the system to over flow. Check the system for leaks and make any required repairs.
4. Adjust the water and air level in the expansion tank.
5. With strainers in place, start the pumps. Systematically check each vent to ensure that all of the air is bled from the system.
6. Verify that make-up water is available and adjusted to properly replace any space remaining when all air is purged. Check the system for leaks and make any additional repairs if needed.
7. Set the boiler to raise the loop temperature to approximately 85°F (29.4°C). Open the drain at the lowest point in the system. Verify that make-up water replacement rate equals rate of bleed. Continue to bleed the system until the water appears clean or for at least three hours, whichever is longer.
8. Completely drain the system.

## Troubleshooting

**IMPORTANT: It is not the intent of this maintenance manual to resolve any problems with the operation of your Ice Air unit. Please contact a trained servicer or building maintenance staff immediately if your unit fails to perform properly.**

1. Contact a trained service technician to conduct full unit diagnostics and repair to equipment.
2. Record any unit that does not operate noting the unit serial number on your report.

**⚠️ RECOGNIZE THIS SYMBOL AS A SAFETY PRECAUTION.**

**⚠️ WARNING:** Ice Air will not be responsible for any injury or property damage arising from improper service or service procedures. If you install or perform service on this unit, you assume responsibility for any personal injury or property damage which may result. Many jurisdictions require a license to install or service heating and air conditioning equipment.

**⚠️ WARNING HIGH VOLTAGE:** Disconnect all power before servicing or installing unit. Multiple power sources may be present. Failure to do so may cause property damage, personal injury or death.

**If unit is not operating, conduct the following checks:**

1. Check the electrical connections.
2. Check the voltage and current against the electrical specifications on the unit nameplate.
3. Look for wiring errors. Check for loose screw connections in both line and low voltage terminals.
4. Check the water supply piping for proper water connection.
5. Check for dirty filters.
6. Check indoor fan for proper operation.
7. Check that unit did not cycle off due to improper thermostat settings.
8. Check for fault codes on the control board – consult the Board Troubleshooting Table.



## System Check List

Installer: Complete unit and system checkout and follow unit start-up procedures provided with the unit. Use this form to record information, temperatures and pressures during start-up. Keep this form for future reference.

### Location Information.

Owner: \_\_\_\_\_

Address: \_\_\_\_\_

Model Number: \_\_\_\_\_

Serial Number: \_\_\_\_\_

Unit Location in Building: \_\_\_\_\_

Date: \_\_\_\_\_

Sales Order No: \_\_\_\_\_

In order to minimize troubleshooting and costly system failures, complete the following checks and data entries before the system is put into full operation.

Temperatures: (Circle) F or C

Antifreeze: \_\_\_\_\_ Type: \_\_\_\_\_ %

Pressures: (Circle) PSIG or kPa

Allow unit to run 15 minutes in each mode before taking data.

Do not connect service manifold gauges during start up unless instructed by Ice Air service tech.

	Cooling Mode	Heating Mode
Return-Air Temperature DB (°F)		
Supply-Air Temperature DB (°F)		
Temperature Differential		
Entering Fluid Temperature (°F)		
Leaving Fluid Temperature (°F)		
Temperature Differential		
Water Pressure IN		
Water Pressure OUT (PSI)		
Pressure Differential (PSI)		
Flow Rate (GPM)		
Supply Voltage at Contactor (V)		
Transformer Low Side Volts (V)		
Compressor Amps (A)		
Motor Amps (A)		

Precautions and preparations listed are for general knowledge and to define basic guidelines. Local codes and existing practices should be observed and preformed by a professional. Due to Ice Air's ongoing product development programs, the information in this document is subject to change without notice.









## Product Nomenclature

Model Selection **8 FCVC 02 F P A L X A A A X X L A A A B B Y D P A A S A**  
 1 2 3 4 5 6 7 8 9 10 11 12 13 14 15 16 17 18 19 20 21 22 23 24 25 26  
 Primary Part

Item #	Matrix Name	Code String Value	Description
19	FLOW VALVE HW	B	Circuit Setter (B&G Calibrated Balancing Valve)
		C	Autoflow valve - 0.5 gpm
		D	Autoflow valve - 1.0 gpm
		E	Autoflow valve - 1.3 gpm
		F	Autoflow valve - 1.5 gpm
		G	Autoflow valve - 2.0 gpm
		H	Autoflow valve - 2.5 gpm
		I	Autoflow valve - 2.8 gpm
		J	Autoflow valve - 3.0 gpm
		K	Autoflow valve - 3.3 gpm
		L	Autoflow valve - 3.5 gpm
		M	Autoflow valve - 4.0 gpm
		N	Autoflow valve - 4.5 gpm
		O	Autoflow valve - 5.0 gpm
		P	Autoflow valve - 5.5 gpm
		Q	Autoflow valve - 6.0 gpm
		R	Autoflow valve - 6.5 gpm
		S	Autoflow valve - 7.0 gpm
		T	Autoflow valve - 7.5 gpm
		U	Autoflow valve - 8.0 gpm
V	Autoflow valve - 8.5 gpm		
W	Autoflow valve - 9.0 gpm		
Y	Autoflow valve - 9.5 gpm		
Z	Special		
X	No Flow valves		
20	STRAINER	Y	Y-strainer
		B	Y-strainer with Blowdown
		X	No strainer

Item #	Matrix Name	Code String Value	Description
21	DRAIN VALVE	D	Drain Valve with Isolation Valve and Hose Connection
		X	No Drain Valve
22	PT PORTS	P	PT Ports (on supply and return)
		S	PT Ports on Supply
		R	PT Ports on Return
		X	No PT Ports
23	AIR VENT	A	Automatic Air Vent
		M	Manual Air Vent
		X	No Air Vent
24	PIPE FITTINGS	A	Female NPT Pipe Fittings
		C	Male NPT Pipe Fittings
		E	Sweat Pipe Fittings
		G	Union Pipe Fittings
		I	Isolation Valves with Unions
		K	Isolation Valves with Female NPT Connections
		M	Isolation Valves with Male NPT Connections
		O	Isolation Valves with Sweat Connections
25	FILTER	S	Standard Fiberglass Filter
		T	MERV 8 Filter
		V	MERV 13 Filter
26	VALVE SHIPPING OPTIONS	A	Assembled
		S	Shipped Loose
		X	No Valve Package

Precautions and preparations listed are for general knowledge and to define basic guidelines. Local codes and existing practices should be observed and performed by a professional. Due to Ice Air's ongoing product development programs, the information in this document is subject to change without notice.



## Notes or Technical Comments

Precautions and preparations listed are for general knowledge and to define basic guidelines. Local codes and existing practices should be observed and performed by a professional.  
Due to Ice Air's ongoing product development programs, the information in this document is subject to change without notice.



## Limited Warranty

### Twelve (12) Month Warranty of entire Packaged Terminal Equipment

Ice-Air, LLC ("Ice Air" or the "Company") warrants, solely to the person or entity that directly purchased the packaged terminal system from the Company (the "Original Owner"), that the entire packaged terminal system is free from defects in material and workmanship for a period of twelve (12) months from the date of delivery (the "Twelve Month Warranty"). Any part or portion thereof which becomes defective under normal use during the period of this warranty will be repaired or replaced, provided Ice Air's examination shall prove to its satisfaction that the part was or became defective under normal use. Ice Air's obligations under this warranty are subject to the satisfaction of the conditions set forth in the last paragraph of this Section and are limited to: (a) repairing the defective part or (b) furnishing a replacement part provided the defective part is returned to Ice Air, without shipping damage, transporting charges prepaid. No reimbursement will be made for expenses incurred in making field adjustments or replacements unless specifically authorized in writing by the Company.

Except as otherwise provided in the last sentence of this paragraph, the Company is not obligated under this warranty for field labor such as service for inspection, removing, packing and/or reinstalling water source unit, nor for the return transportation charges. In addition, the Company is not obligated under this warranty to make reimbursement of the labor or service charges of any other party. Notwithstanding the foregoing, labor provided by or at the direction of the Company during the twelve (12) month period from the date of delivery referred to in the initial paragraph above, in connection with the Twelve Month Warranty of parts provided in the initial paragraph above, is included in such warranty, solely in the case in which a packaged terminal system is sold by the Company to an Original Owner for use in a new facility to be constructed and located in the greater New York City metropolitan area. For the avoidance of doubt, except in the case described in the preceding sentence, the Company has no obligation under this warranty to provide for field labor or to make reimbursement of the labor or services charges of any other party, provided, however, that the Company, in its sole and absolute discretion, may elect to do so, so long as (i) such election is set forth in a writing signed by the Company and (ii) the facility at which the applicable packaged terminal system is or will be installed is located in the greater New York City metropolitan area (the "Metropolitan Area").

The obligations of the Company set forth in the preceding paragraphs of this Section are in all cases subject to the satisfaction of the following conditions: (x) the Company shall have received proof, satisfactory to the Company, of the purchase by the Original Owner from the Company of the packaged terminal system that is the subject of the Original Owner's claim, (y) all amounts due and payable to the Company on or prior to the date of such claim in respect of such packaged terminal system shall have been paid in full and (z) nothing shall exist or occur that relieves the Company, in accordance with the terms of this agreement, from the performance of its warranty obligations hereunder.

### OPTIONAL Extended Refrigeration Circuit Warranty

#### 2<sup>nd</sup> – 5<sup>th</sup> year compressor parts only; labor not included

The Optional Extended Refrigeration Circuit Warranty MUST be purchased from Ice Air within thirty (30) days from date of delivery to be valid. The hermetically sealed refrigeration circuit (consisting of the motor, compressor assembly, evaporator coil, coaxial / condenser coil, and interconnecting tubing) is warranted to the Original Owner for four additional years from date of the expiration of the twelve-month Warranty. Components under this warranty will be supplied at Ice Air's expense provided the failed component is returned to Ice Air. This optional warranty does not include any other parts of the equipment such as fans, fan motors, controls, cabinet parts, electrical relays, capacitors, protective devices, or wiring. Ice Air is not obligated under this warranty for field labor such as service for inspection, removing, packing, and/or reinstalling the refrigeration circuit, nor for return transportation charges. In addition, the Company is not obligated under this warranty to make reimbursement of the labor or service charges of any other party. Ice Air reserves the right to make a handling and inspection charge in the case of parts or equipment improperly returned as defective and/or as being in warranty.

To obtain assistance under the parts warranty or to purchase the optional extended warranty, simply contact Ice Air Customer Service at 80 Hartford Avenue, Mount Vernon, New York 10553 Phone 914-668-4700.

#### Additional warranty options include:

##### 2<sup>nd</sup> – 5<sup>th</sup> year full unit parts only warranty

##### 2<sup>nd</sup> – 5<sup>th</sup> year compressor parts and labor warranty, so long as such labor is performed in the NY Metropolitan Area

##### 2<sup>nd</sup> – 5<sup>th</sup> year complete parts and labor warranty (Full unit coverage), so long as such labor is performed in the NY Metropolitan Area.

All Warranties (which must be purchased separately) constitute the Original Owner's sole remedy. They are given in lieu of all other warranties. Ice Air is not liable for incidental or consequential damages, whether the theory is breach of this or any warranty, negligence, or strict tort. No person (including any agent, salesman, dealer, or distributor) has authority to expand Ice Air's obligation beyond the terms of these express warranties, or to state that the performance of the product is other than that published by Ice Air. In addition, neither the Original Owner nor any such person has the right to sell, transfer or assign, or attempt to sell, transfer or assign, any rights of the Original Owner in or to the warranties provided for herein, no such sale, transfer or assignment shall be binding upon Ice Air and any such sale, transfer or assignment is null and void and of no force or effect.

### General Conditions

The above warranties are void if Ice Air's equipment has been damaged, misused, subjected to abnormal use or service or its serial number has been altered, defaced, or removed, or payment for the equipment is in default. Ice Air is not responsible for service to correct conditions due to misapplication, faulty or improper installation, inadequate wiring, incorrect voltage conditions or unauthorized opening of the refrigeration circuit, nor for consequential damages. In case Ice Air's equipment is installed in conjunction with cabinets, grills, louvers, controls, or other parts manufactured by others, these warranties shall apply only to Ice Air's manufactured portion of the equipment. The conditions of the standard warranty plan are effective for 12 months from the date of equipment delivery. Ice Air reserves the right to make a handling and inspection charge in the case of parts or equipment improperly returned as defective and/or as being warranty.

### Important Disclaimers

#### Ice Air Has No Responsibility For:

##### (A) Certain Damages

The following are the responsibility of the user. None of the following constitutes a manufacturing defect, and each is expressly excluded from the warranty plan:

- 1) Failure of unit to operate satisfactorily due to improper amount of air on evaporator coil or air supply to air cooled condensers.
- 2) Damage to unit or unsatisfactory operation due to improper cleaning of evaporator coil or use of unit in corrosive atmosphere locations such as chemical plants, refineries, or salt spray areas.
- 3) Damage to unit from unsatisfactory operation due to blown fuses, inadequate or interrupted electrical service, use of improper electrical protective devices or operation of unit on power supply other than covered by nameplate rating of unit.
- 4) Damage due to failure to properly maintain unit.
- 5) Damage due to transportation or handling prior to and during installation.
- 6) Damage due to accident or from alteration, improper installation or tampering.
- 7) Failure to clean or replace filter timely.
- 8) Misapplication of equipment.
- 9) Damage due to deviation from original design and intended use of equipment.
- 10) Damage due to use of additional accessories either unapproved or approved but modified or manipulated.

##### (B) Installation

Ice Air is not responsible for the design, execution, and performance of the installation method or any of the accessory items used during installation such as seals, caulking, weatherproofing, supporting structures, attachment means, louvers and frames supplied by others.

##### (C) Check, Test and Start

Check, Test and Start of the air conditioners by an experienced person is the responsibility of the installing contractor. This consists of physically confronting each conditioner operating in both heating and cooling modes and correcting any minor deficiencies noted. After the equipment leaves the factory, it may become damaged or maladjusted during transportation or on the job. Sometimes wires are disconnected accidentally, or fan motors move on their bases due to rough handling, causing fans to strike; a component(s) may be inoperable. The correction of such conditions is part of the Check, Test and Start. Note that unless otherwise specifically agreed to in writing, Ice Air has no obligation to perform, nor does the price of its equipment include field labor in connection with the performance of, these Check, Test, and Start procedures (or the like).



80 Hartford Avenue, Mount Vernon, NY 10553

Tel: 877-ICE-AIR-1 (877-423-2471)

Fax: 914-668-5643

email: service@ice-air.com

[www.ice-air.com](http://www.ice-air.com)

© 2023 by Ice Air, LLC

ICE6082.3 11/23